

PMC110

# **SAP NetWeaver Cloud Portal - Overview, Benefits and Scenarios**

Vitaly Vainer, Yariv Zur  
October, 2012

**Follow us on twitter @PORTAL\_SAP**

**Tweet about the session #PMC110**



# Disclaimer

---

This presentation outlines our general product direction and should not be relied on in making a purchase decision. This presentation is not subject to your license agreement or any other agreement with SAP. SAP has no obligation to pursue any course of business outlined in this presentation or to develop or release any functionality mentioned in this presentation. This presentation and SAP's strategy and possible future developments are subject to change and may be changed by SAP at any time for any reason without notice. This document is provided without a warranty of any kind, either express or implied, including but not limited to, the implied warranties of merchantability, fitness for a particular purpose, or non-infringement. SAP assumes no responsibility for errors or omissions in this document, except if such damages were caused by SAP intentionally or grossly negligent.

# Agenda

---

Cloud Portal Overview

Cloud Portal Scenarios

Cloud Portal Demo

Cloud Portal Technology

Cloud Portal Roadmap

Session Summary



# Cloud Portal Overview

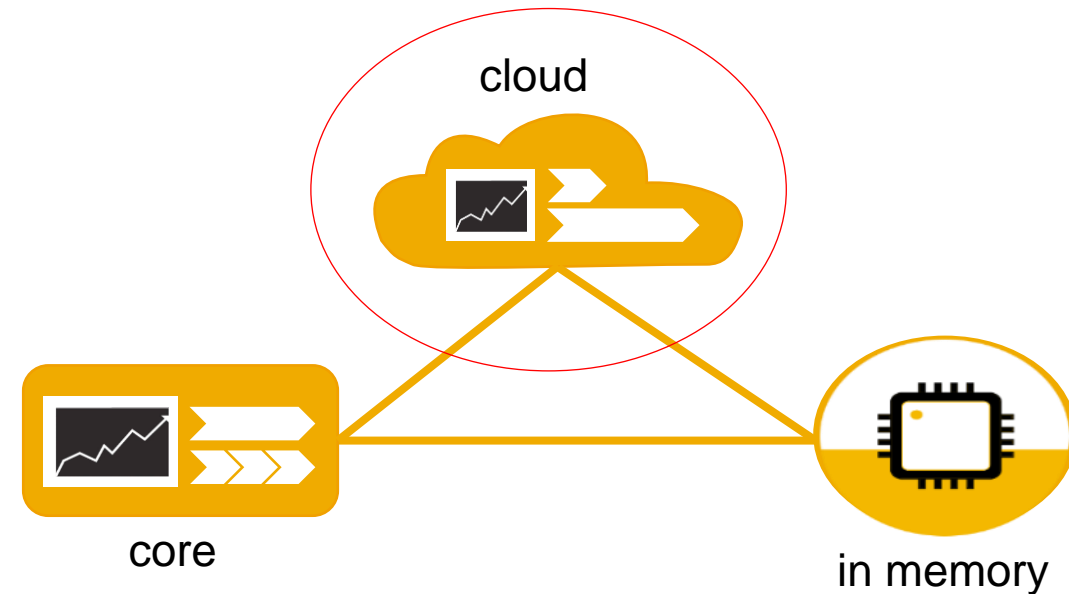
# SAP NetWeaver Portal Portfolio Innovations

## Cloud is one of the strategic directions for SAP Portal roadmap

SAP NetWeaver Portal provides comprehensive solutions for usability, content management, collaboration and mobility.

Planned innovations focus on the following areas:

- Extended reach to portal services and content through **mobile channels** via tablets and smartphones (with optional SAP Mobile Platform integration)
- Easy to consume **cloud portal services** based on SAP NetWeaver Cloud platform leveraging services of SAP's **in-memory** computation engine (HANA)
- Comprehensive, integrated **user productivity and collaboration solution** with Portal, Enterprise Workspaces and Content Management
- Enterprise ready, highly scalable platform with reduced TCO for serving **intranet and extranet** scenarios





# Create Business Sites is Fast and Simple

## Fast



- ✓ Create site in few minutes
- ✓ Publish on the spot
- ✓ No training required
- ✓ Use your existing content

## Powerful



- ✓ On Premise Connectivity
- ✓ Based on Open Standards
- ✓ Runs on SAP HANA and NetWeaver Cloud

## Maintenance Free



- ✓ Provisioned as a service
- ✓ Always ready for use
- ✓ IT department is free from maintenance activities

## Integrated



- ✓ Integrates your existing content
- ✓ Integrates with your existing authentication mechanism
- ✓ Integrates with your authorization concepts

# Value Proposition

---



## Innovation

For your LoBs, SAP NetWeaver Cloud Portal enables creation of fast, appealing, mobile-enabled and business goal oriented sites with minimal IT involvement



## Cost Leadership & Value

For your IT, Cloud Portal enables meeting LoB ad-hoc site creation needs, with minimal setup, security and TCO concerns, while leveraging existing investments



## Enrichment

For your Value Chain, Cloud Portal enables collaborating around business processes with you, in a secure, scalable and transparent manner



# Cloud Portal Scenarios



# Two types of offerings

---

## Portal as a Service

A group of UI services running on a cloud, enabling existing SAP customers to **develop** a portal solution with their own UI on top.



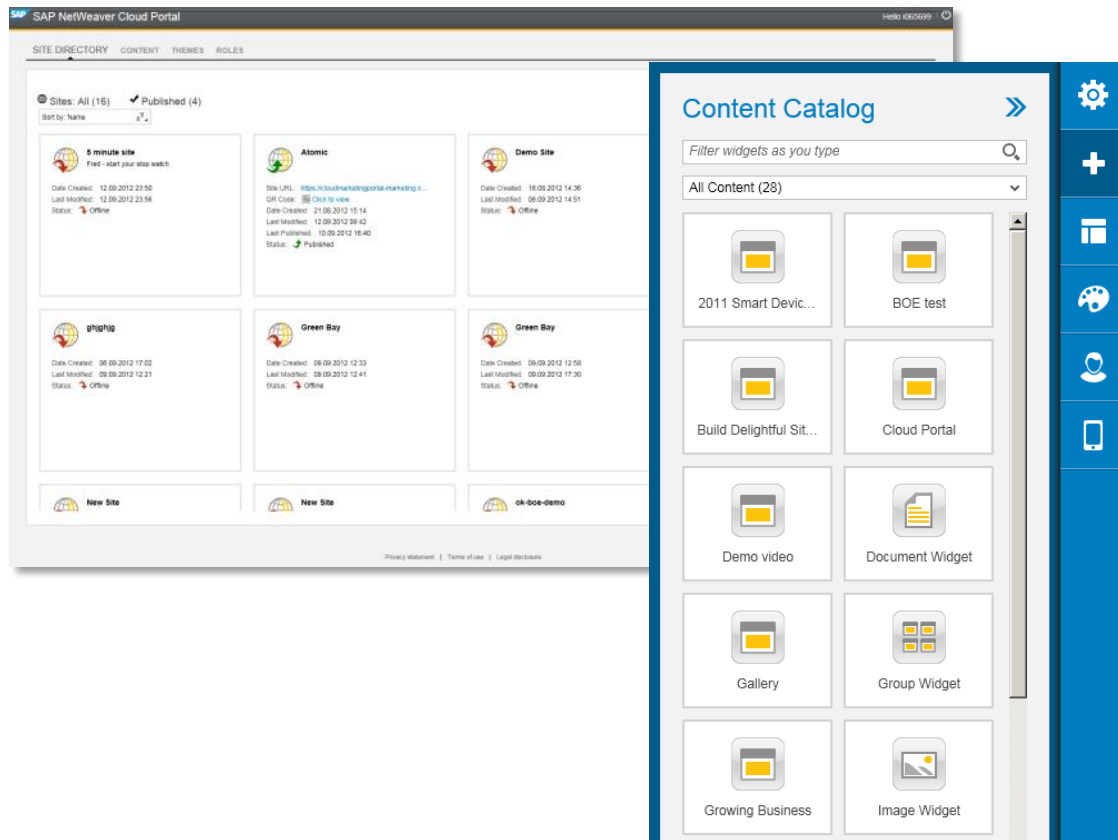
## On Demand Sites

A solution enabling existing SAP customers to easily create sites with structured, social & unstructured content reusing existing assets



# Site creation made easy

End user level **easy site creation** and social consumption easily bringing web and business content together in just few minutes



## Key elements

- AppStore-like experience
- Allow easy sites administration
- Customized themes
- User invitations

# Site consumption made modern

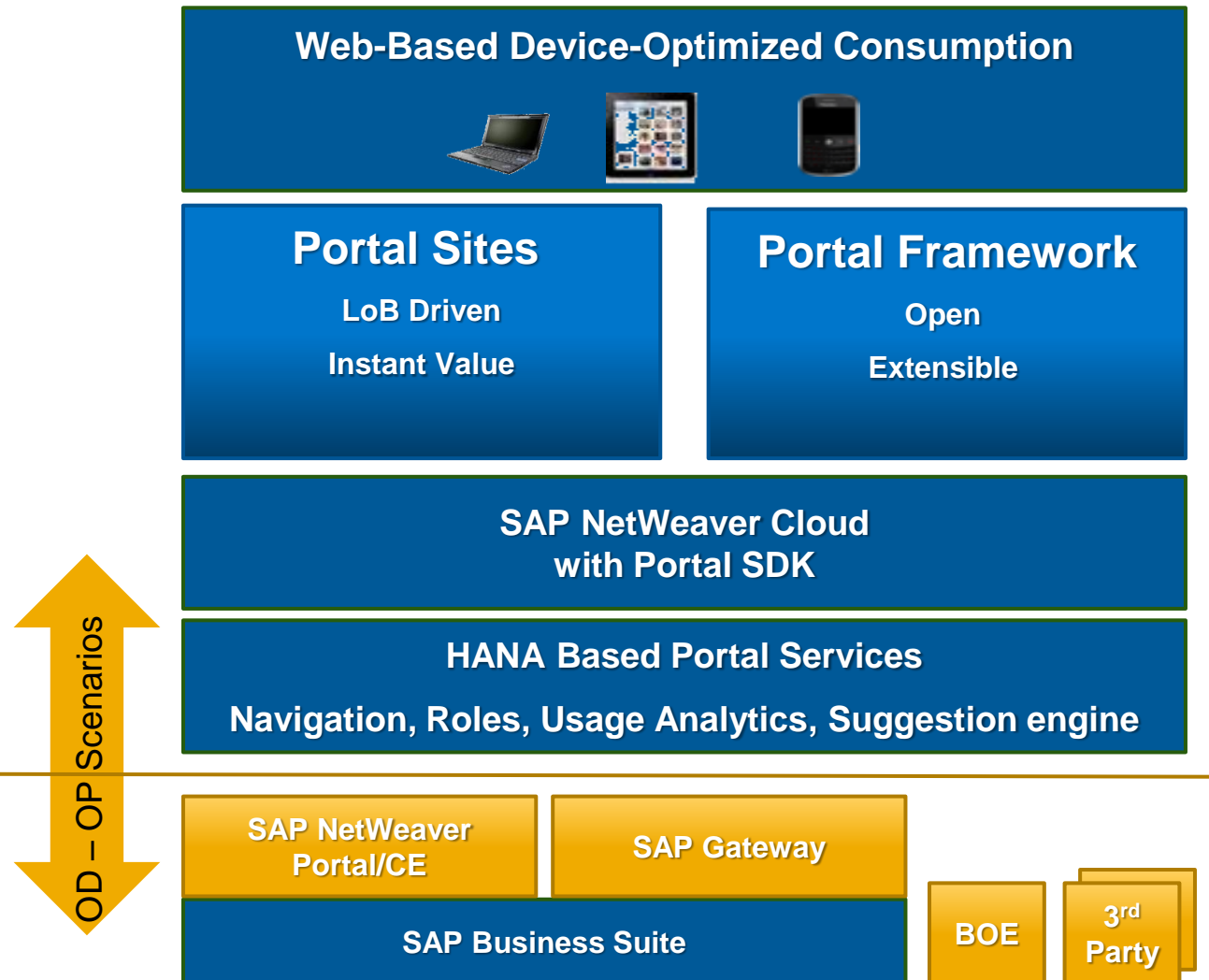
Consume where you are on the road or at your desktop while preserving unique user experience of the client.



## Key elements

- Tablet and touch in mind
- HTML5 with gesture support
- Following Apple iOS HIG and NNG usability guide
- B2E, B2B and B2C scenarios applicable

# Site creation made open



## Key elements

- Public cloud hosted by SAP
- Leveraging HANA
- Exposes services in SAP Cloud Platform for Java-based apps, REST and JavaScript
- Add web/OpenSocial content to the site
- Leverage existing on-premise investments
- Create your own UI while reusing out of the box components
- Unstructured content complements structured content



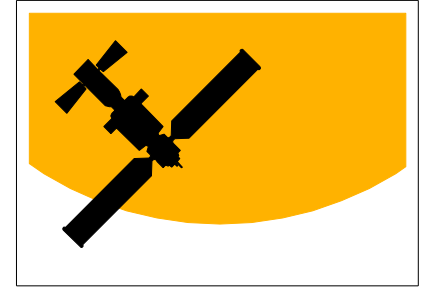
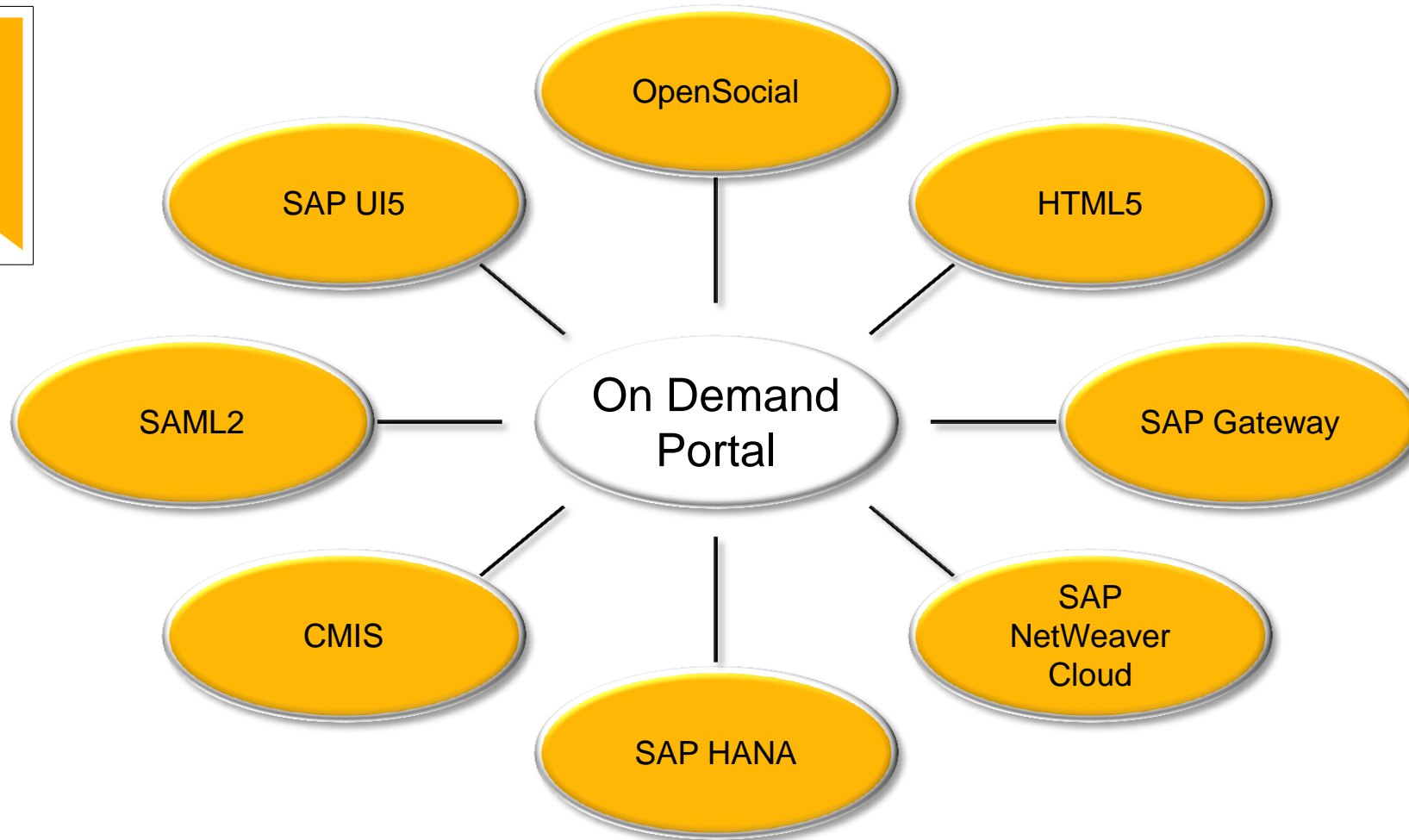


# Demo



# Cloud Portal Technology

# Enabling Standards & Technologies



# Standard For Your Every Need



## Open Social

Make more apps available to more users, by providing a common API that can be used in many different contexts.

## SAML2

Allows authorization with customers' Identity Providers (IDP) and identity propagation to other Service Providers (SP)

## CMIS

Allows unified access to document repositories



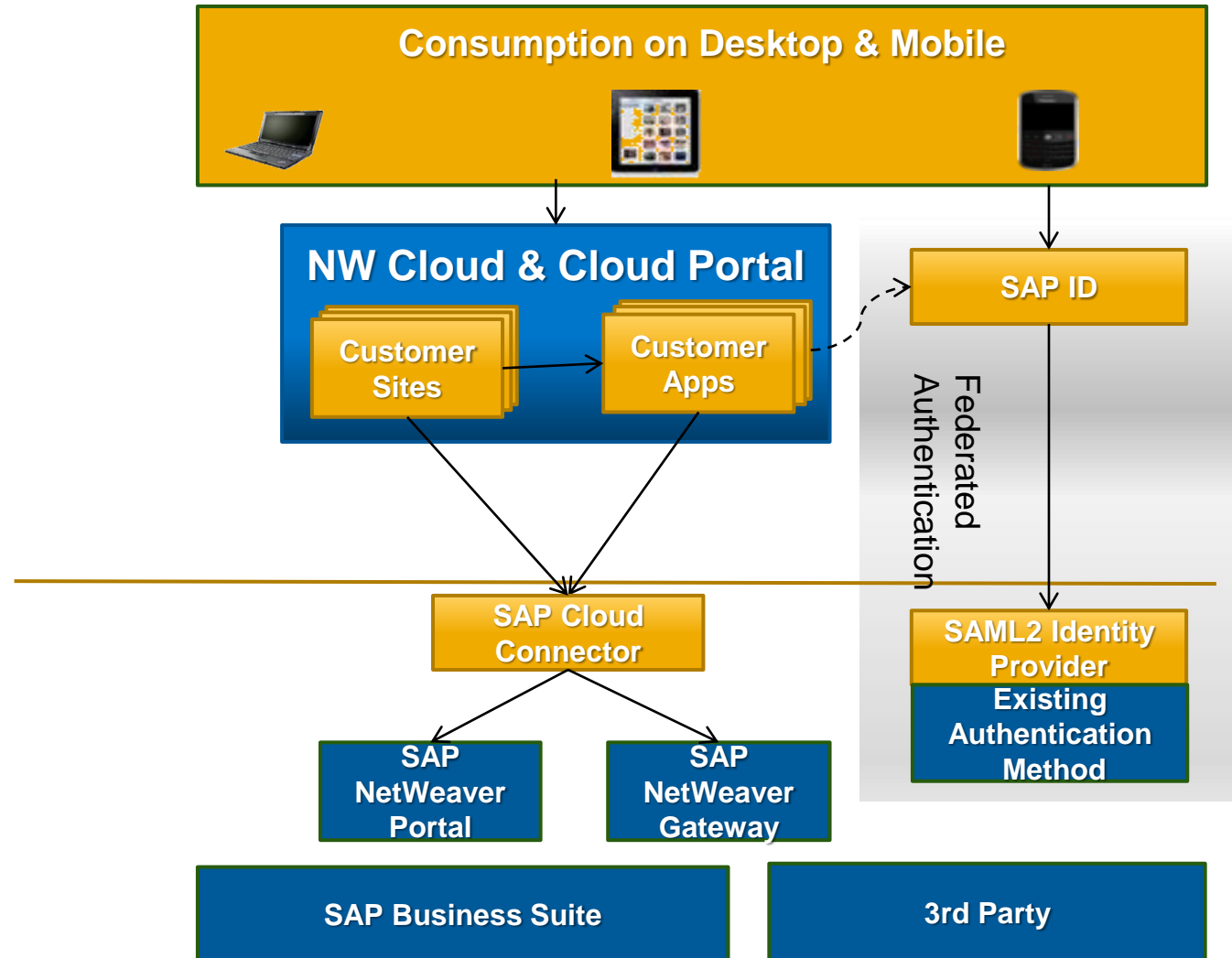
# Integration of On Premise Content

Cloud Portal allows federated authentication with existing customer's authentication method

The Cloud Portal enables various methods of consuming On-Premise content:

1. Consume EP 7.0/7.3 iViews and ABAP web application \*
2. Consume data services based on SAP Cloud Connector (SCC)

\* Assuming client has direct access to the web application





# Cloud Portal Roadmap

# SAP NetWeaver Cloud Portal

Enhancements for easy consumption and integration scenarios

## New Scenarios

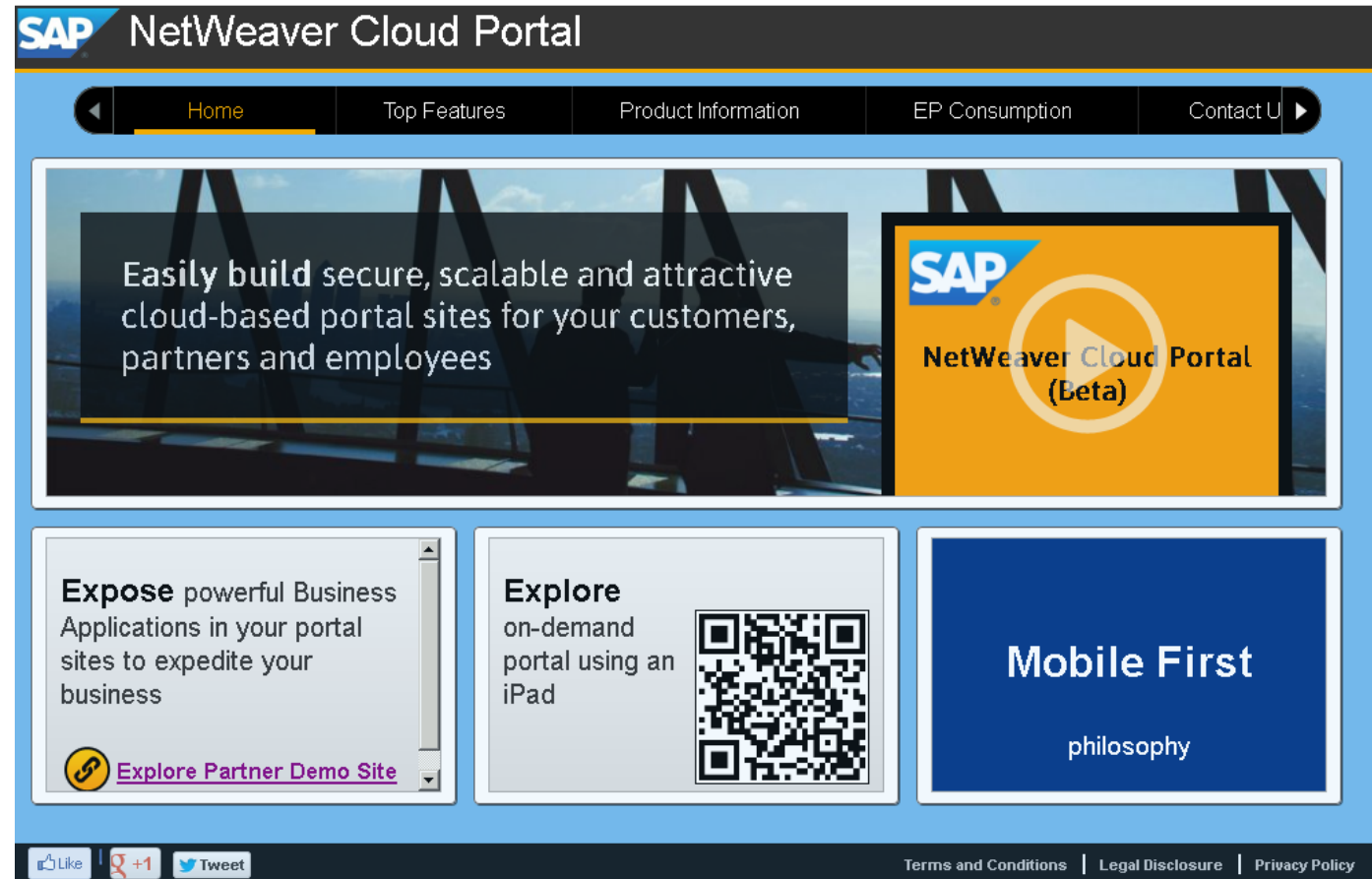
- Personalized, social-enabled experience
- Vertical solutions

## New capabilities

- Extended mobile support
- Extended widget development support
- Extended on premise integration
- HANA-based usage analytics
- Content recommendation
- More out of the box content

## More open standards

- OAuth, OpenID



## FUTURE DIRECTION

This is the current state of planning and may be changed by SAP at any time.



# Session Summary



# Summary

## Evaluate SAP NetWeaver Cloud Portal

---

- ✓ **SAP NetWeaver Cloud Portal provides Fast, Secure, Powerful and Integrated with your existing assets solution for Business Sites and frontend of Business Applications**
- ✓ **Based on Open Standards, SAP HANA and SAP NetWeaver Cloud**
- ✓ **You Can Start Evaluation Today**

# Related TechEd Sessions

---

## Workshops

- CD360 - NW Cloud Hands On Session
- CD264 - Enriching your SAP Portal with custom widgets and extensions
- PMC266 - Experience the new SAP NetWeaver Cloud Portal in Action

## Q&A and Networking

- CD812 - Integrate On-Premise Systems with NW Cloud
- CD813 - Discover NW Cloud Labs
- Customer Success Stories with NW Cloud

## Lectures

- PMC108 - SAP NetWeaver Portal Portfolio - Roadmap on Premise, on Demand, on Device
- TEC115 - NW Cloud Platform for Customer Enterprise Applications
- SIS104 - SAP ID Service – Identity Provider for the Cloud

# Further Information

---

## SAP Public Web

SAP NetWeaver Cloud Portal Community

<http://scn.sap.com/community/netweaver-portal/cloud>

SAP NetWeaver Cloud Portal Experience Site

<http://tiny.cc/ODPortal>

## SAP Education and Certification Opportunities

[www.sap.com/education](http://www.sap.com/education)

## Watch SAP TechEd Online

[www.sapteched.com/online](http://www.sapteched.com/online)



# Feedback

Please complete your session evaluation for PMC110.

**Thanks for attending this SAP TechEd session.**





# © 2012 SAP AG. All rights reserved.

---

No part of this publication may be reproduced or transmitted in any form or for any purpose without the express permission of SAP AG. The information contained herein may be changed without prior notice.

Some software products marketed by SAP AG and its distributors contain proprietary software components of other software vendors.

Microsoft, Windows, Excel, Outlook, PowerPoint, Silverlight, and Visual Studio are registered trademarks of Microsoft Corporation.

IBM, DB2, DB2 Universal Database, System i, System i5, System p, System p5, System x, System z, System z10, z10, z/VM, z/OS, OS/390, zEnterprise, PowerVM, Power Architecture, Power Systems, POWER7, POWER6+, POWER6, POWER, PowerHA, pureScale, PowerPC, BladeCenter, System Storage, Storwize, XIV, GPFS, HACMP, RETAIN, DB2 Connect, RACF, Redbooks, OS/2, AIX, Intelligent Miner, WebSphere, Tivoli, Informix, and Smarter Planet are trademarks or registered trademarks of IBM Corporation.

Linux is the registered trademark of Linus Torvalds in the United States and other countries.

Adobe, the Adobe logo, Acrobat, PostScript, and Reader are trademarks or registered trademarks of Adobe Systems Incorporated in the United States and other countries.

Oracle and Java are registered trademarks of Oracle and its affiliates.

UNIX, X/Open, OSF/1, and Motif are registered trademarks of the Open Group.

Citrix, ICA, Program Neighborhood, MetaFrame, WinFrame, VideoFrame, and MultiWin are trademarks or registered trademarks of Citrix Systems Inc.

HTML, XML, XHTML, and W3C are trademarks or registered trademarks of W3C®, World Wide Web Consortium, Massachusetts Institute of Technology.

Apple, App Store, iBooks, iPad, iPhone, iPhoto, iPod, iTunes, Multi-Touch, Objective-C, Retina, Safari, Siri, and Xcode are trademarks or registered trademarks of Apple Inc.

IOS is a registered trademark of Cisco Systems Inc.

RIM, BlackBerry, BBM, BlackBerry Curve, BlackBerry Bold, BlackBerry Pearl, BlackBerry Torch, BlackBerry Storm, BlackBerry Storm2, BlackBerry PlayBook, and BlackBerry App World are trademarks or registered trademarks of Research in Motion Limited.

Google App Engine, Google Apps, Google Checkout, Google Data API, Google Maps, Google Mobile Ads, Google Mobile Updater, Google Mobile, Google Store, Google Sync, Google Updater, Google Voice, Google Mail, Gmail, YouTube, Dalvik and Android are trademarks or registered trademarks of Google Inc.

INTERMEC is a registered trademark of Intermec Technologies Corporation.

Wi-Fi is a registered trademark of Wi-Fi Alliance.

Bluetooth is a registered trademark of Bluetooth SIG Inc.

Motorola is a registered trademark of Motorola Trademark Holdings LLC.

Computop is a registered trademark of Computop Wirtschaftsinformatik GmbH.

SAP, R/3, SAP NetWeaver, Duet, PartnerEdge, ByDesign, SAP BusinessObjects Explorer, StreamWork, SAP HANA, and other SAP products and services mentioned herein as well as their respective logos are trademarks or registered trademarks of SAP AG in Germany and other countries.

Business Objects and the Business Objects logo, BusinessObjects, Crystal Reports, Crystal Decisions, Web Intelligence, Xcelsius, and other Business Objects products and services mentioned herein as well as their respective logos are trademarks or registered trademarks of Business Objects Software Ltd. Business Objects is an SAP company.

Sybase and Adaptive Server, iAnywhere, Sybase 365, SQL Anywhere, and other Sybase products and services mentioned herein as well as their respective logos are trademarks or registered trademarks of Sybase Inc. Sybase is an SAP company.

Crossgate, m@gic EDDY, B2B 360° , and B2B 360° Services are registered trademarks of Crossgate AG in Germany and other countries. Crossgate is an SAP company.

All other product and service names mentioned are the trademarks of their respective companies. Data contained in this document serves informational purposes only. National product specifications may vary.

The information in this document is proprietary to SAP. No part of this document may be reproduced, copied, or transmitted in any form or for any purpose without the express prior written permission of SAP AG.