

Asset Optimization with SAP Enterprise Asset Management

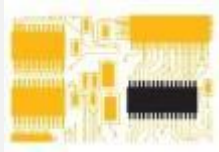
Dean Fitt, Solution Manager, EAM

SAP Mining and Metals Forum. Darmstadt, Germany, 9 October 2014

Public



Evolution of Technology Changing Asset Management?



M2M

Self-regulation



Smart World

Assets
provide
information



Cyber-Physical Systems

Machines
connected to
the business



Internet of Things

Connected via
one protocol



Social

Knowledge
shared in
communities



Mobile and Cloud

Access to
information
everywhere

**Smart products, assets, and human beings
in a hyper connected world**

*Source: acatech POSITION Cyber-physical Systems

Asset Management

ISO 55000 series influencing our processes

Value:

Assets exist to provide value to the organization and its stakeholders

Alignment:

Transform organizational objectives into technical and financial activities, decisions and tasks

Leadership:

Leadership and workplace culture are determinants of value realization

Assurance:

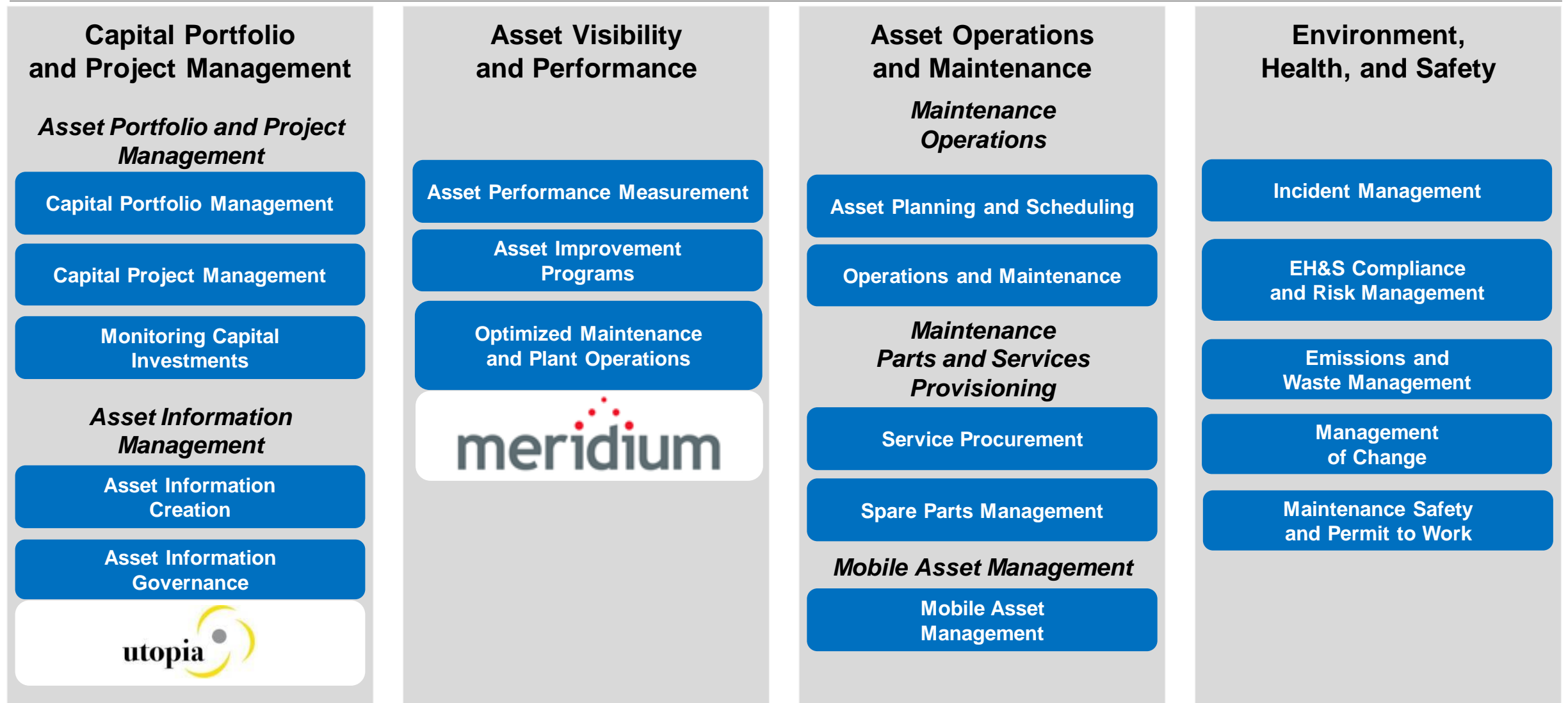
Asset management enables the assets to fulfil their required function



International
Organization for
Standardization

SAP Enterprise Asset Management

Covering the complete asset lifecycle



Asset Management

How can we meet the challenges?

Connect, analyze, predict, and act



- Leverage real-world data
- Build models of asset behavior
- Predict the future
- Take appropriate action

Increase value, reduce consumption



- Ensure asset data accuracy
- Collaborate with OEMs and service providers
- Optimize performance

Simplify the complex



- Make information digestible
- Bring information on site
- Enable users to take decisive action

Asset Information



SAP Enterprise Information Management Solutions

Run Assets Better with complete and accurate information

SAP Data Services:

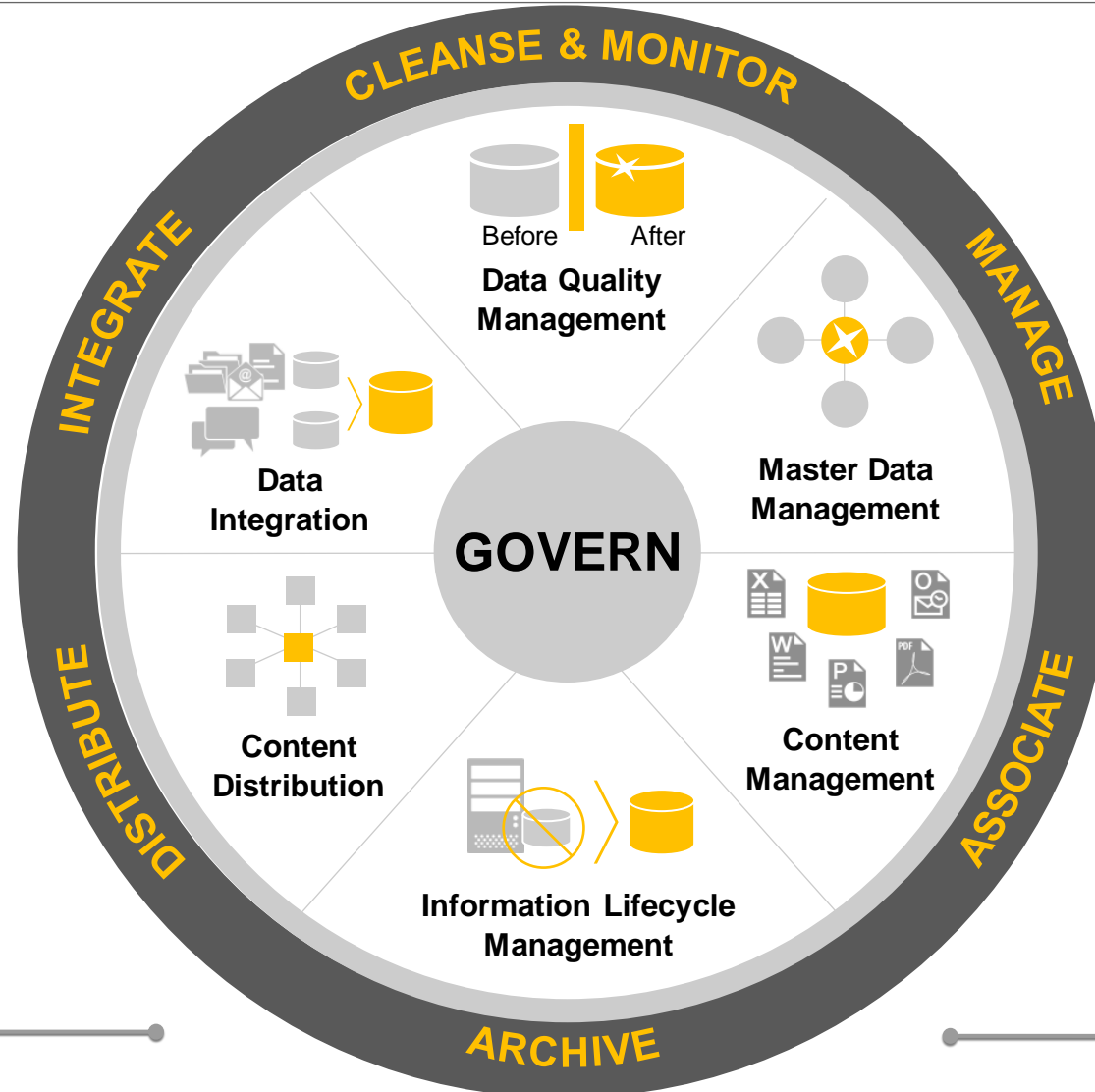
Quality controls for asset information

SAP Document Presentment by OpenText:

Automate assembly & transmission of asset-related documents

SAP Information Lifecycle Management:

Manage retention and destruction asset information in SAP



SAP Information Steward:

Monitor & govern data quality to improve asset information

SAP Master Data Governance:

Enterprise-wide master data control for assets, vendors materials, etc.

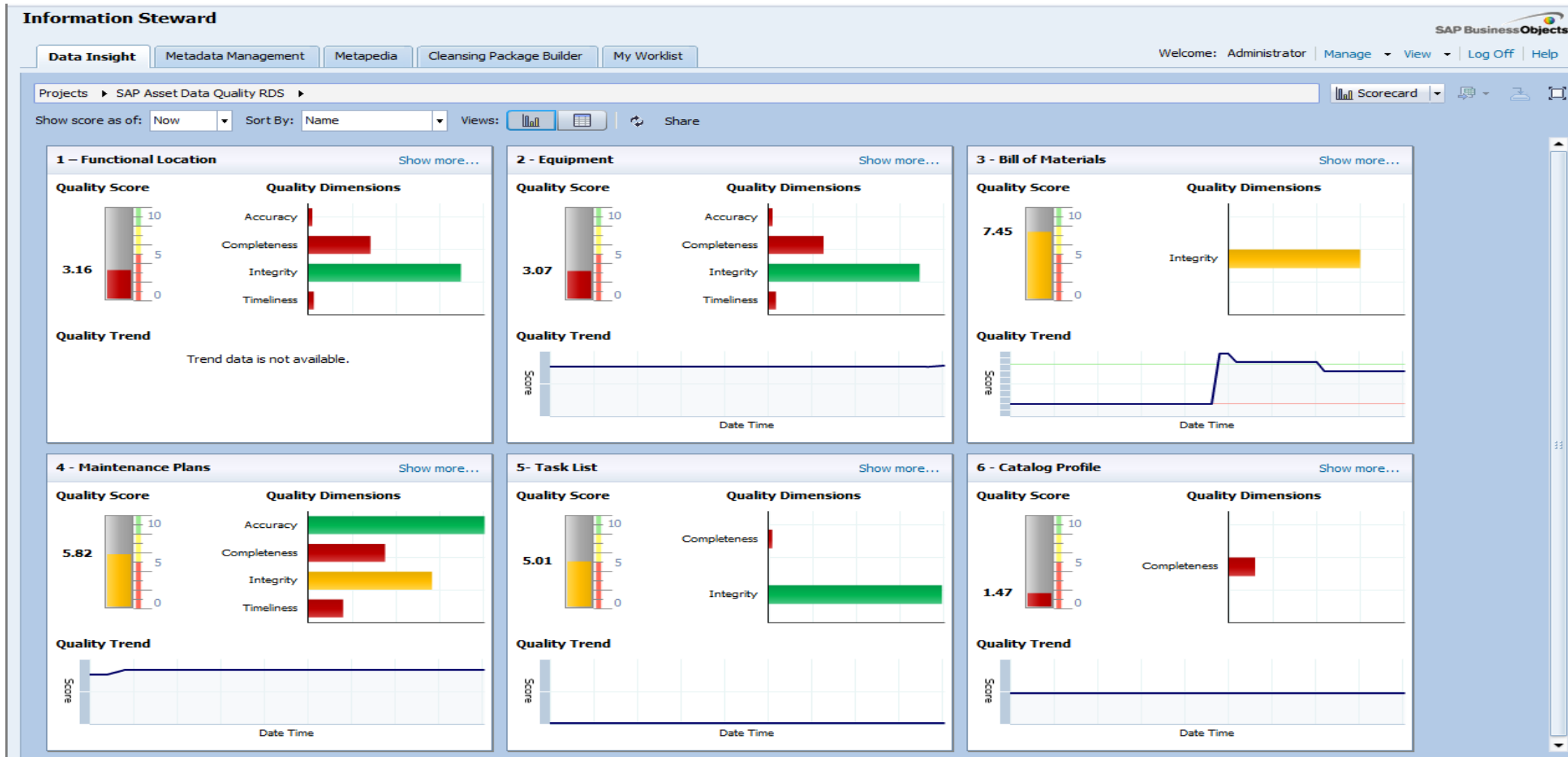
SAP Extended ECM by OpenText:

Document control and collaboration throughout asset lifecycle

SAP Asset Data Quality Solution

Data Insight of Asset Master Data

The SAP Asset Data Quality rapid-deployment solution allows customers the ability to assess, validate and continuously monitor the quality of their asset master data.



Examples of Asset Data Quality Rules

Maintenance Plans / Items

- Safety Critical Equipment (SCE) with Maintenance Plan Items
- Failed Records will indicate Safety Critical Equipment without Assignment to Maintenance Plan Items

Bills of Material (BOM)

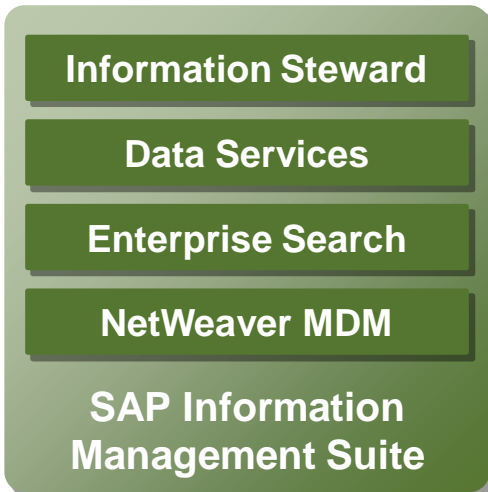
- Identify repair parts that are not on a BOM. Repair parts not on a BOM are considered obsolete.
- Failed records: Repair parts with Inventory but not on a BOM

Technical Objects (Functional Locations / Equipment)

- Check that the Technical Object has been modified in the last 5 years
- Failed records are Technical Objects that have not been modified in the last 5 years

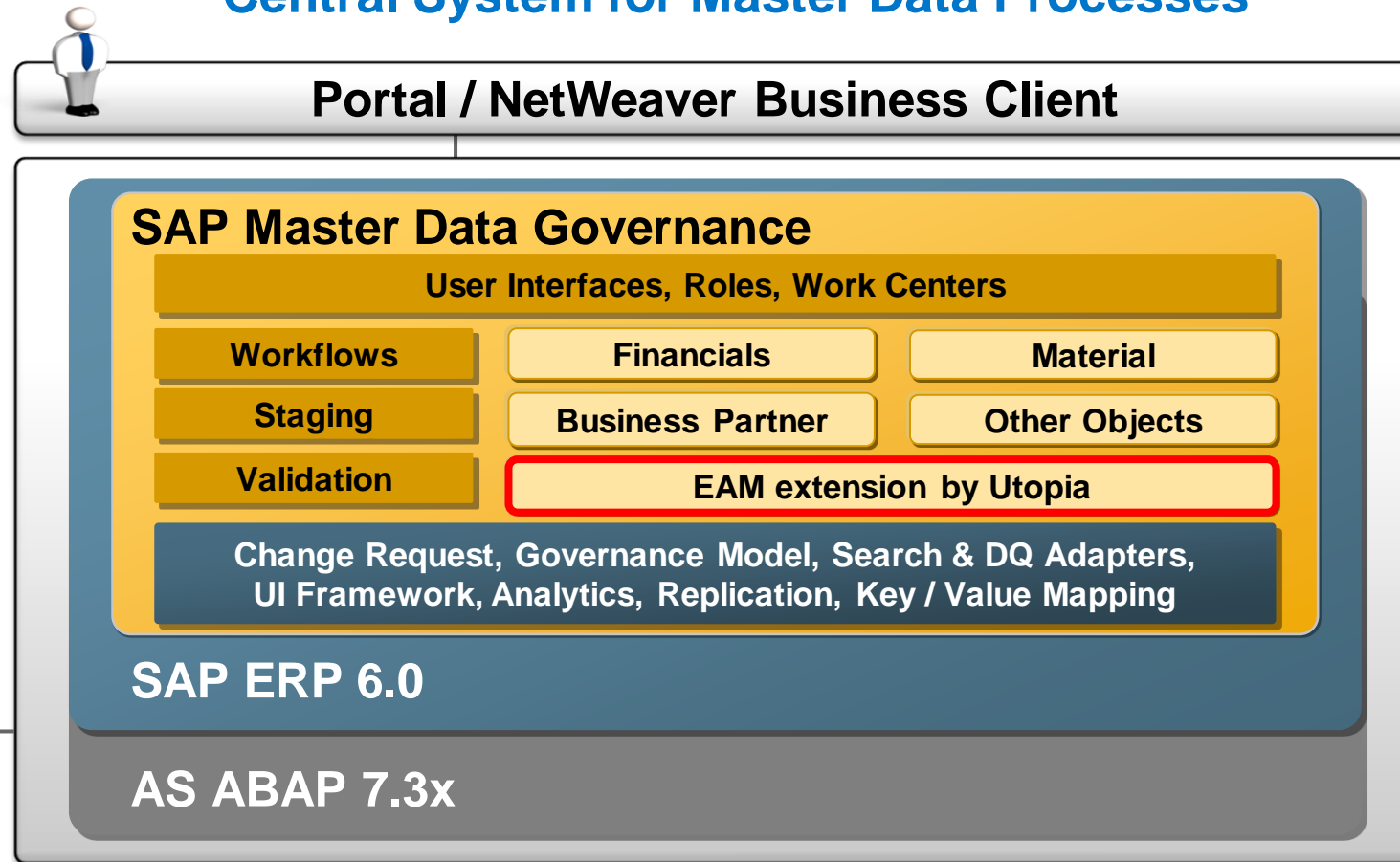
Managing Master Data

Optional EIM Parts



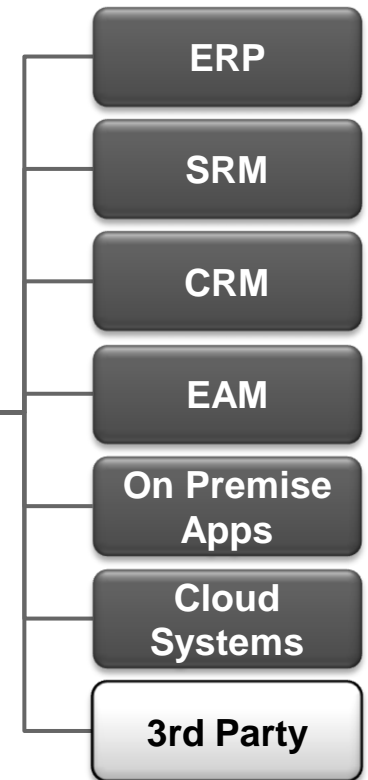
Integrate services for data cleansing, matching & consolidation

Central System for Master Data Processes



Tight integration into SAP Business Logic and leveraging standard AS ABAP

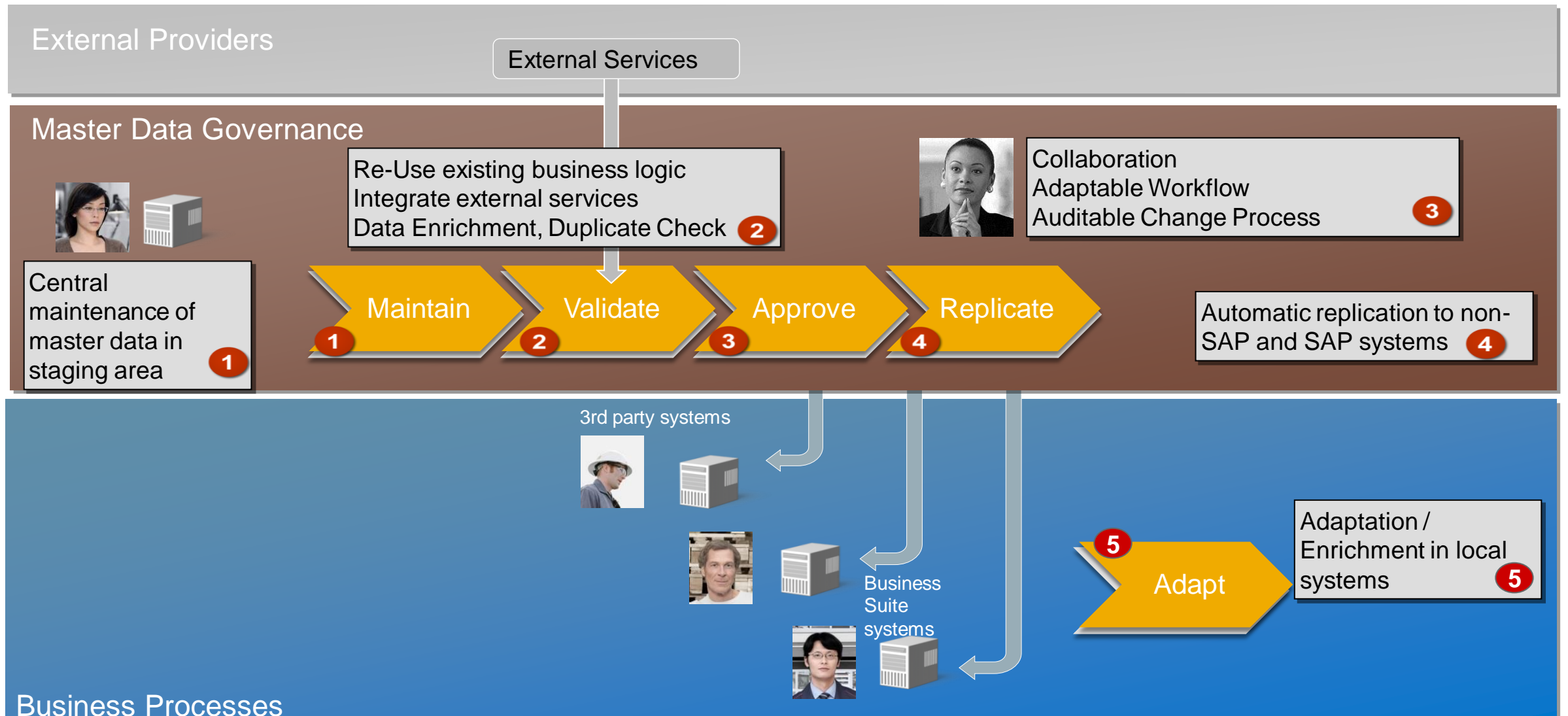
Client Systems



Client systems are integrated via various channels (such as SOA, ALE, RFC, File)

SAP Master Data Governance

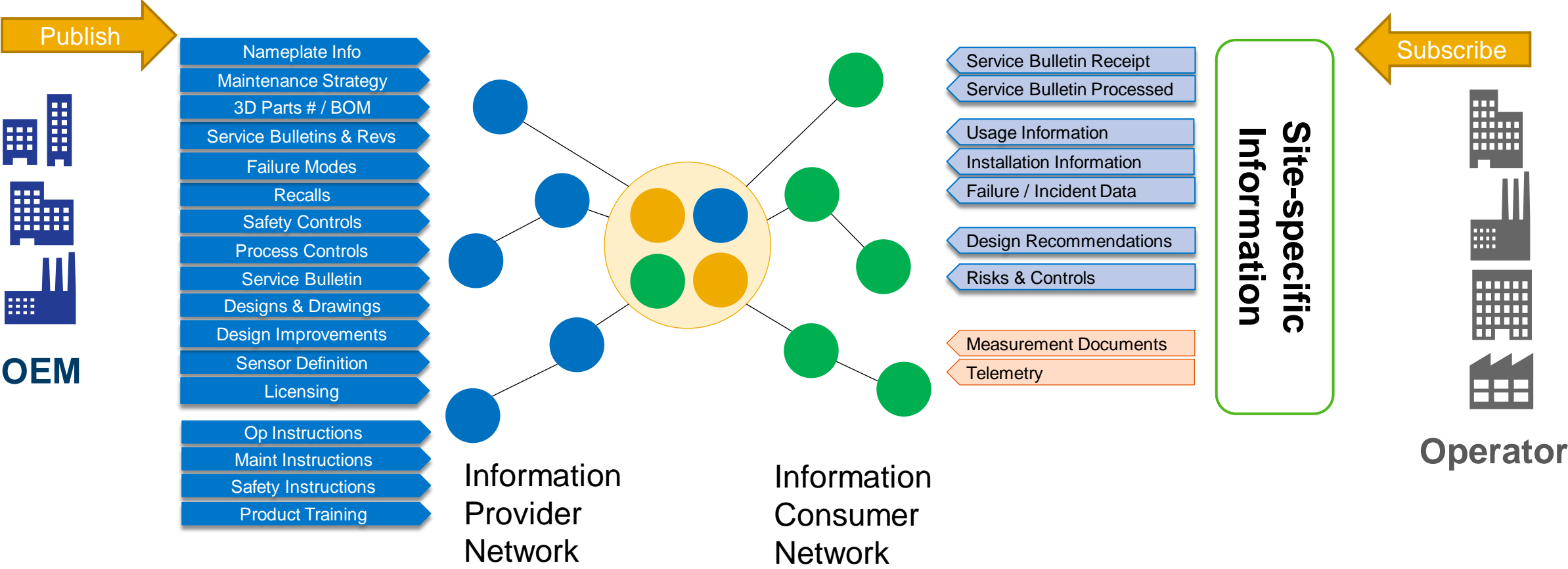
Process flow archetype



Asset Information Network

planned

Predictive Maintenance	Asset Lifecycle	Work Schedule	Global Inventory
Manufacturer Specific Apps	Service Providers / Dealers	Benchmarking	Parts Verification



Leveraging operational data

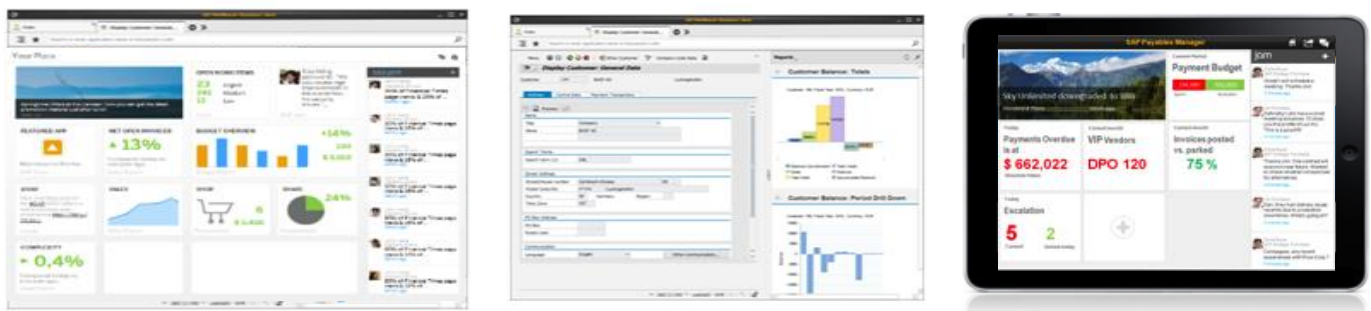


The Technology Advantage

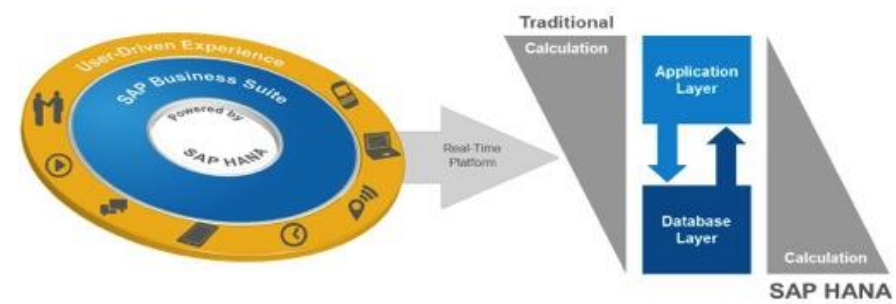
SAP Business Suite Powered by SAP HANA – Platform for Innovation



Role-Based Applications
New class of real time applications



Real Time Analytics
Transactions and detailed analytics together



Faster
Significant Performance Advantage

Real-Time Maintenance Plan Scheduling



Increase

asset utilization and
reduce unplanned asset
downtime



Maximize

asset availability



Up-to-Date

scheduling information
on maintenance
operations

Today

- Maintenance scheduling consumes a great deal of time

- Manual and error-prone process of pre-selection of maintenance plans
- Potentially missing necessary objects for maintenance calls

- High number of maintenance plans which need to be scheduled frequently

With Suite on HANA

- Accelerated mass transaction IP30H
- Instant analysis on top of transactions

- Pre-selection of due plans speeds up the process significantly
- Real-time analytics on all data including machine sensor information
- Schedule all maintenance plans within a specific timeframe

- Planning several times a day (instead of once a week) results in up-to-date scheduling information in maintenance operations
- Faster response times leads to more accurate maintenance scheduling

KPI improvements are high-level estimates, and will have to be validated for each customer situation

SAP HANA Live in SAP ERP Enterprise Asset Management



Target Roles

- ▶ Maintenance Manager/ Planner

Analysis Report Areas

- ▶ Maintenance Orders, Maintenance Notifications, Technical Objects

Business Questions

- ▶ How much were the maintenance costs in the past in a specific plant?
- ▶ What are the estimated maintenance costs for a specific piece of equipment at a specific plant?
- ▶ Which planner group had the highest maintenance costs?
- ▶ How many 'general maintenance activities' were carried out as a result by a specific planner group?
- ▶ Which technical objects have the most breakdowns?
- ▶ What kind of damages occurred for a specific piece of equipment?
- ▶ Did some causes occur more often than others?
- ▶ What were the most common damages for a specific piece of equipment?
- ▶ What were the most common activities carried out for a specific damage?
- ▶ How much was spent on pieces of equipment of a specific class (for example, pumps)?
- ▶ How much was spent on new pieces of equipment of a specific class (for example, monitors) last year?
- ▶ How much were the actual maintenance costs compared to the planned maintenance costs for a specific order type ?

Key Metrics

- ▶ Estimated Total Order Costs
- ▶ Estimated Maintenance Costs
- ▶ Actual Maintenance Costs
- ▶ Number of Created Maintenance Notifications
- ▶ Number of Created Maintenance Orders
- ▶ Number of Actual Maintenance Breakdowns
- ▶ Total repair time
- ▶ Time between repairs
- ▶ No. of Maintenance Notification Damages/Causes /Activities
- ▶ Acquisition Value ...

Dimensions

- ▶ Maintenance Plant
- ▶ Maintenance Planner Group
- ▶ Fiscal Year Period
- ▶ Value Category
- ▶ Plant Section
- ▶ Maintenance Planner Group Name
- ▶ Breakdown Date Year Month
- ▶ Equipment, Functional Location
- ▶ Maintenance Notification Damages/Causes /Activities
- ▶ Maintenance Order Type

Assets Providing Information - Data Sources



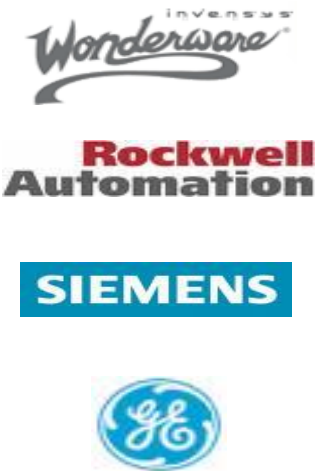
SCADA / HMI / PLC

DCS

Historians

MES

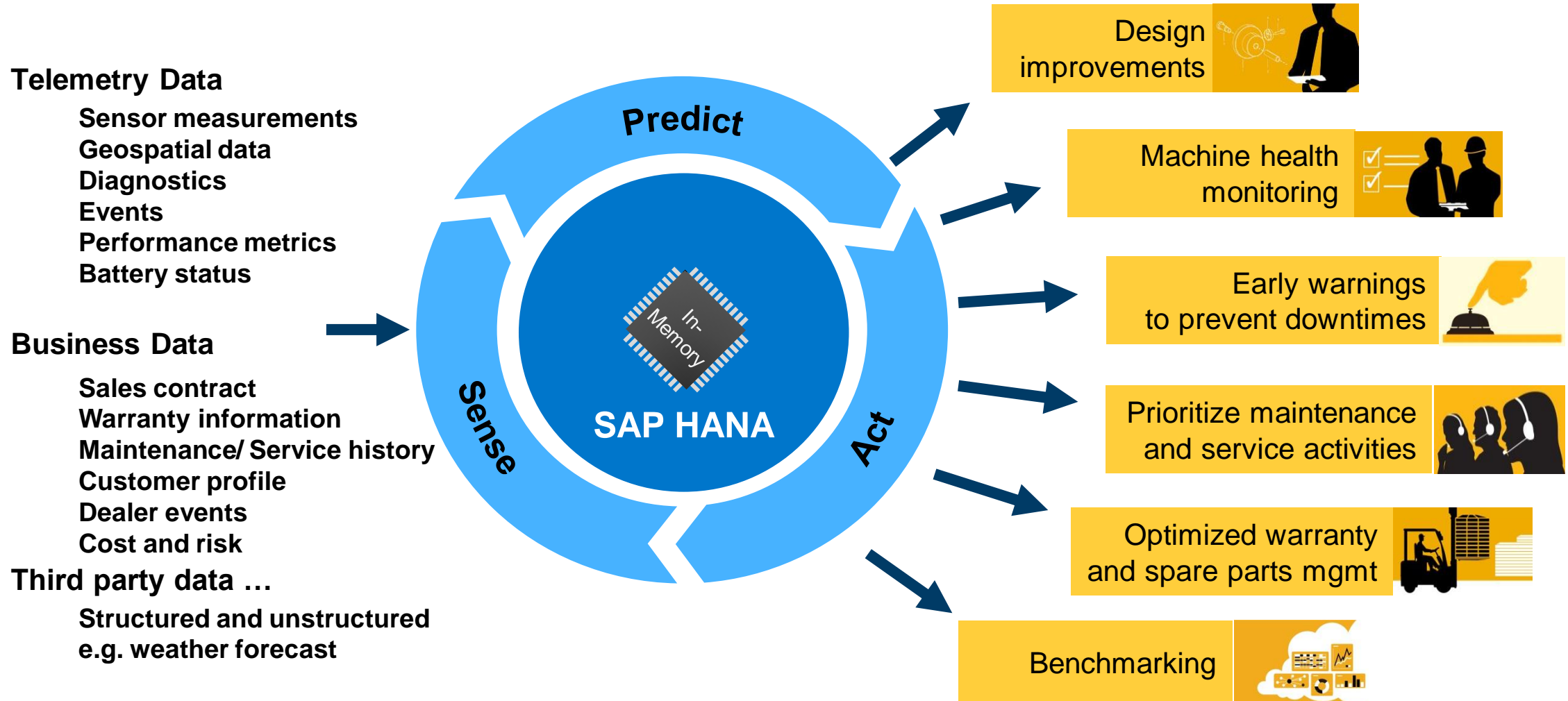
LIMS



Predictive Maintenance and Service

What really matters

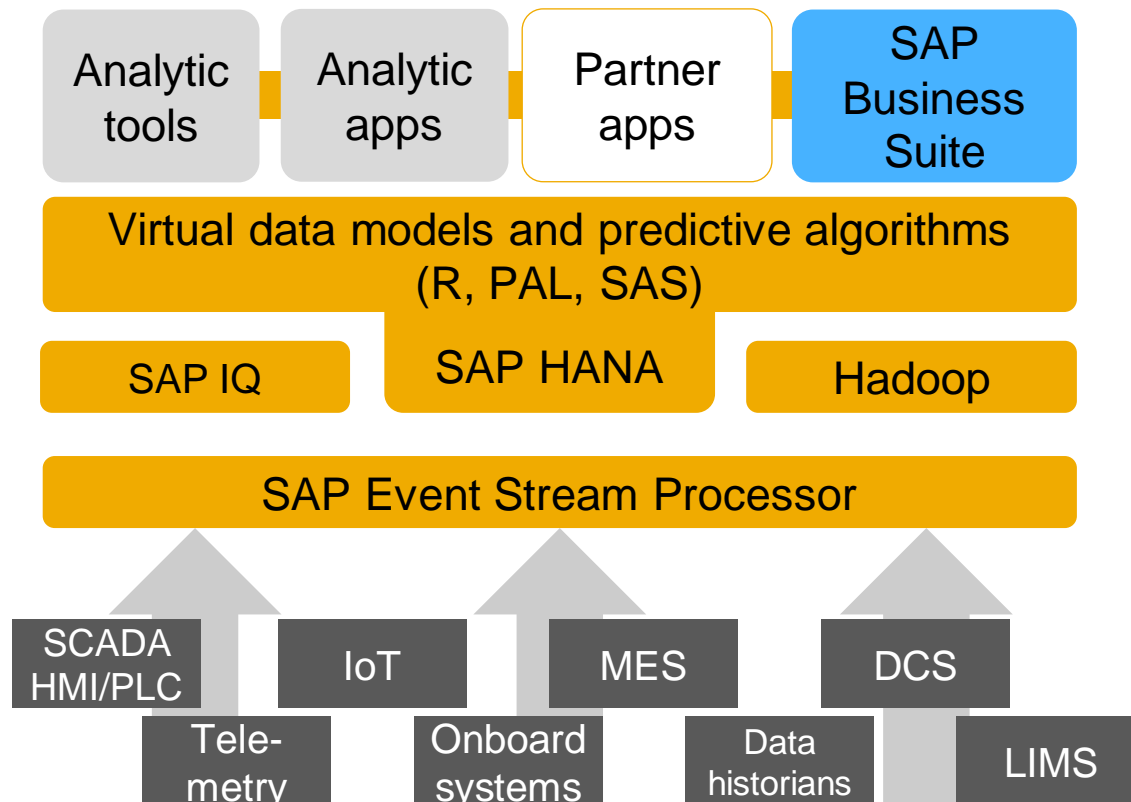
planned



Predictive Maintenance and Service

planned

SAP ESP and SAP HANA are available today to combine business with operational data:

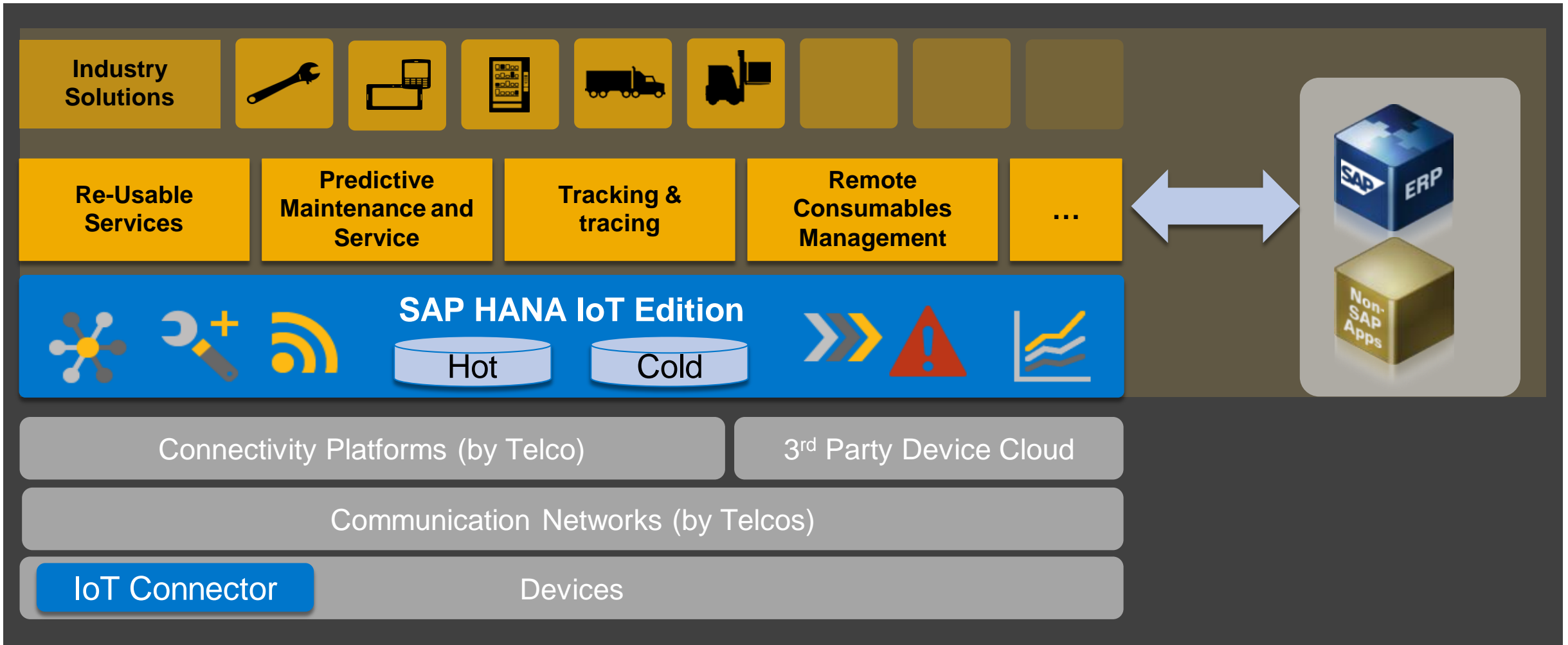


- Generic analytic tools can **TODAY** already be used to find patterns and build models.
- Algorithms are available from both the Predictive Analysis Library (PAL) and "R". Furthermore, a partnership has recently been announced to include further analytics from SAS.
- **Integration with maintenance and service management, warranties, spare parts, and so on can be done today on a customer-specific basis.**
- Further out-of-the-box functionalities are planned, like:
 - Machine health prediction to improve manufacturing quality, service planning, and customer satisfaction.
 - Early identification of emerging issues to avoid unplanned downtime.
 - Prioritization of maintenance and service activities.

SAP Vision: Delivering more than Island Solutions

Solution Stack based on SAP HANA IoT Edition

planned

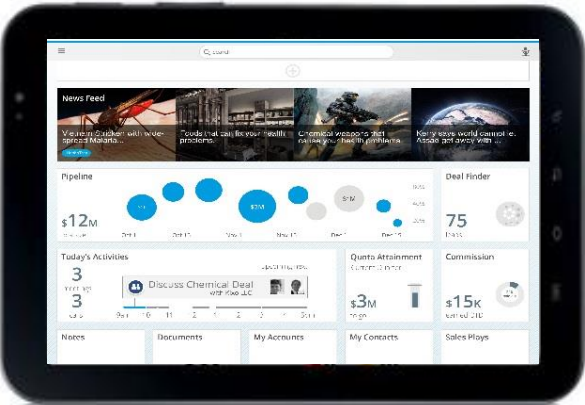


User Experience



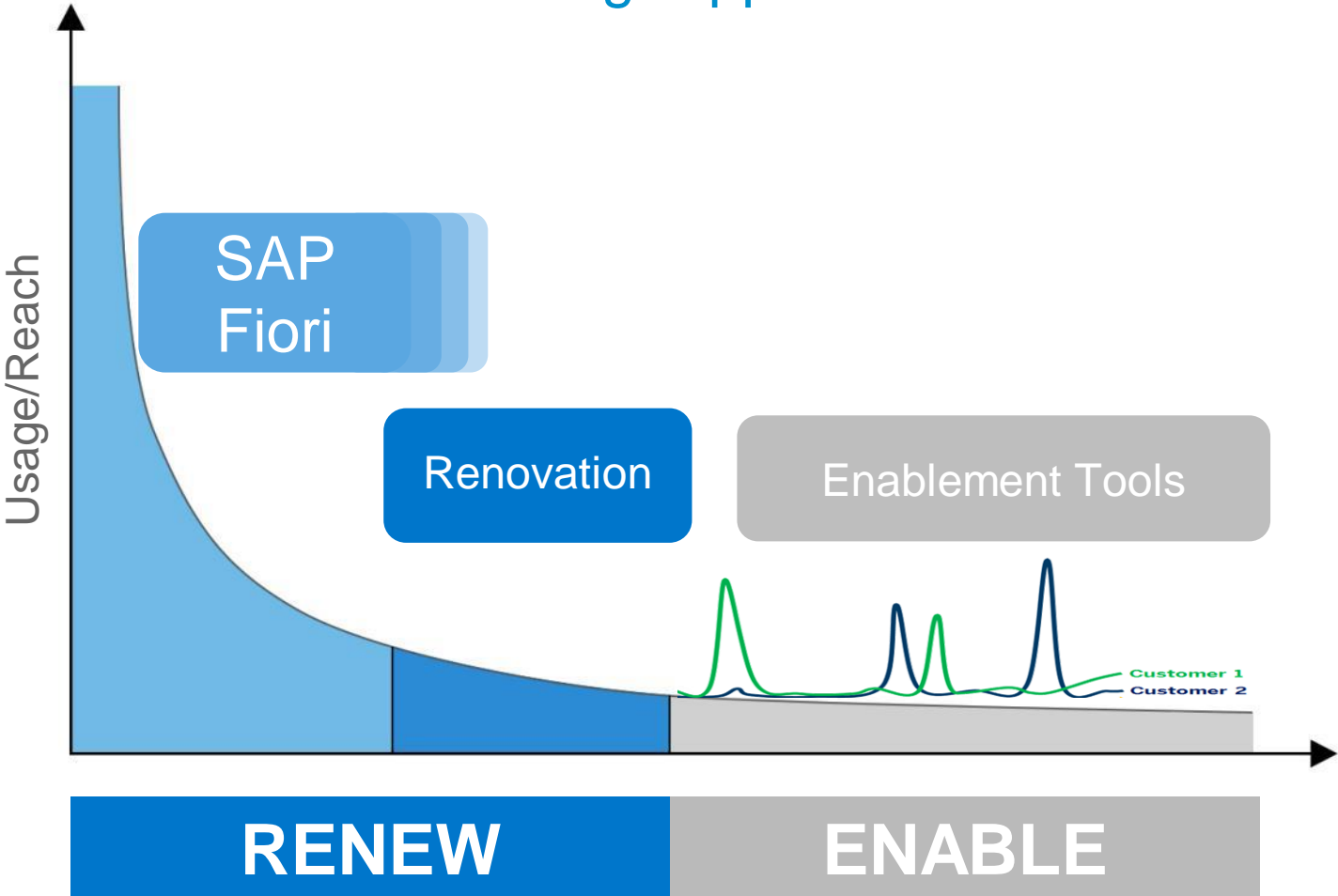
The SAP User Experience Strategy

New Applications



NEW

Existing Applications



RENEW

ENABLE

Examples for Fiori in EAM

NEW

RENEW

ENABLE

UX DESIGN SERVICES

←

Maintenance Order

4500002349

Maintenance Order

1 day ago

General

Order Type: PM01 Regular Maintenance Released

System Status: Released

Priority: 2 High

Equipment: 2345432 Pump Wirtex4355

Operations

010 Perform Vibration Analysis

030 Capture Measurements

020 Visual Inspection

014 Test run

⚙

←

Maintenance Notification

10031562

Maintenance Notification

1 day ago

General

Notification Status: NOPR ORAS

Notification Type: M2 Malfunction Report

Notification Date: 02.04.2013 / 17:16

Priority: 2 High

Maintenance Order: 4039670 Order Description

Breakdown: Yes

Items

PC Personal Computer Display Black

PC Personal Computer No movements

2

⚙

←

Equipment

4500002349

Equipment Description

1 day ago

General

Category: M Machines

Manufacturer: Siemens

Superordinate Equipment: P-100-10S Super Machine

Type: Pump

Functional Location: C1 Compressing Unit

Orders

50002342 ORD1 Released

50009871 ORD3 In Process

50003451 ORD2 Open

50003458 ORD4 Released

Notifications

40002386 Notif 1 High

40003655 Notif2 Critical

40004356 Notif3 High

Maintenance Items

23844760 Item1 High

23845679 Item3 Critical

2384769 Item2 High

30

3

3

⚙

Open in ...

Actions

RENEW the most widely-used scenarios

Harmonize and simplify UIs for key roles

NEW

RENEW

ENABLE

UX DESIGN SERVICES

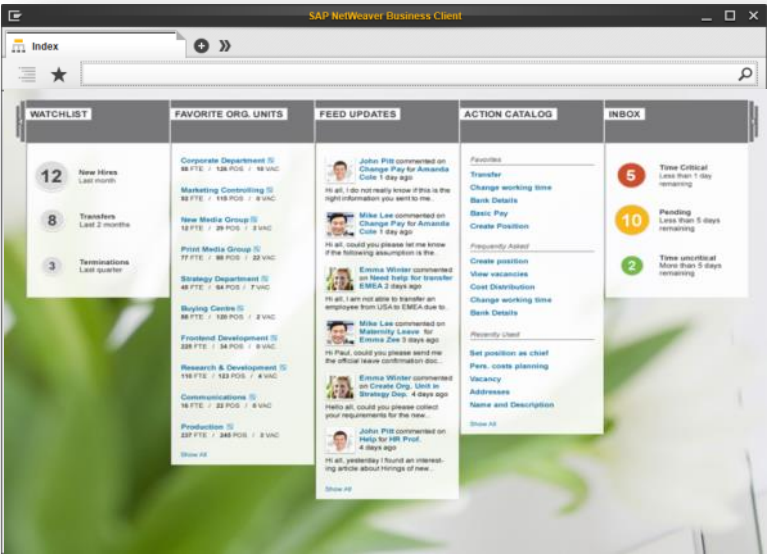
User



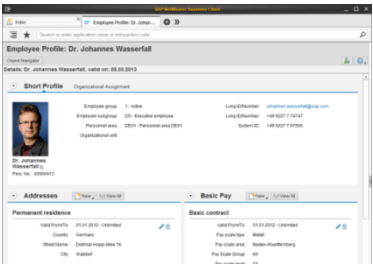
Entry Point



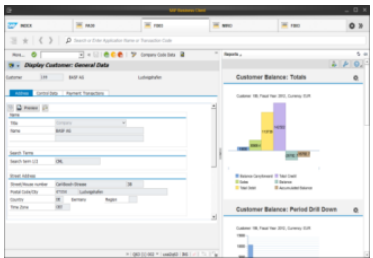
Applications & Content



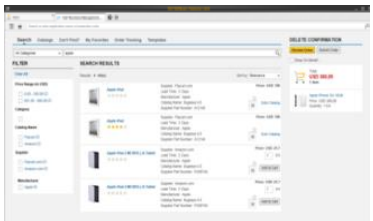
SAP NetWeaver Business Client
SAP Enterprise Portal
SAP Fiori Launchpad



Floorplan Manager
(WebDynpro ABAP)



SAP GUI &
Side Panels



SAPUI5

WebDynpro Options for EAM

WebDynpro for ABAP / Floorplan Manager

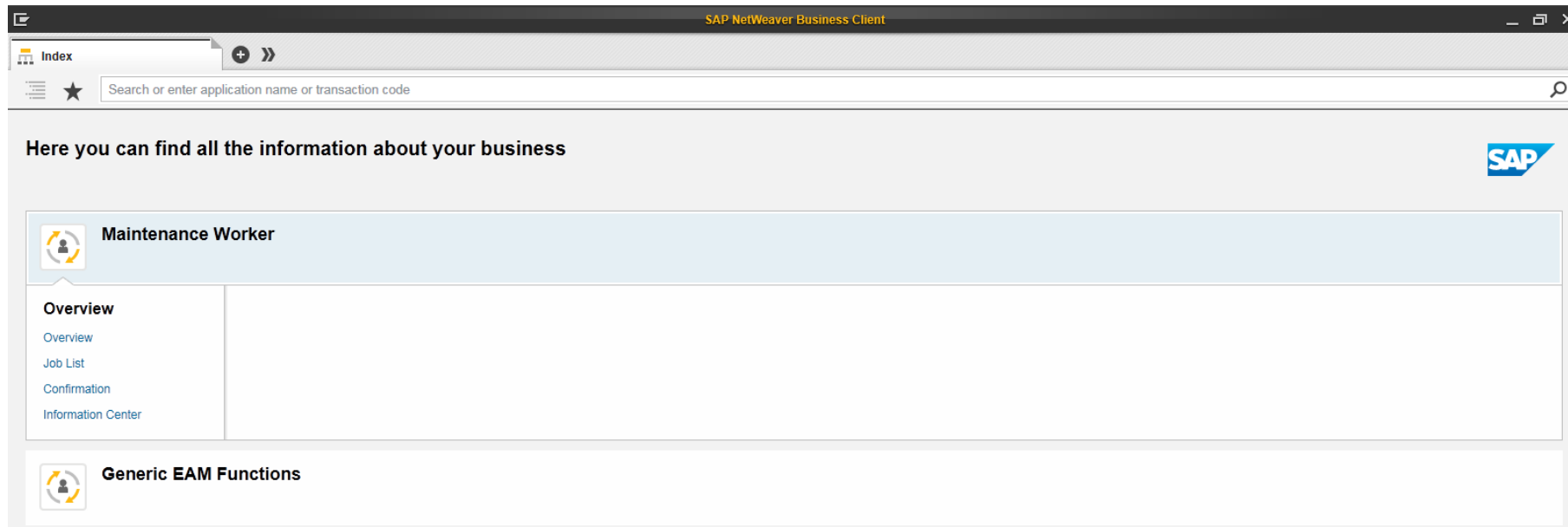
NEW

RENEW

ENABLE

UX DESIGN SERVICES

- EAM Roles for “Maintenance Worker” and “EAM Generic Functions” shipped with EHP 5 & 6



- Substantial Enhancements and Improvements shipped with EHP 7

Asset Viewer - Technical Object Structure

NEW

RENEW

ENABLE

UX DESIGN SERVICES

Asset Viewer : Technical Object P-1000-N003

Technical Object Options Refresh Synchronize Navigator Settings Additional Functions

Technical Object K1 > Technical Object P-1000-N003

Equipment P-1000-N003 Object Description Electric pump 003

Structure

Object	Object ID	Description
▼	K1	Clarification plant
▼	K1-ZPW	Inlet pump plant
▶	K1-ZPW-1	Inlet pump plant - spiral pump
▶	K1-ZPW-2	Inlet pump plant - screening plant
▶	K1-ZPW-3	Inlet pump plant-sewage qty measurement
▼	K1-M	Mechanical purification
▶	K1-M01	Sand trap
▶	K1-M02	Oil and fat trap
▶	K1-MER	Mechanical purification
▼	K1-B	Biological cleaning
▶	K1-B01	Pump station
▼	K1-B02	Filter building
▼	P-1000-N003	Electric pump 003
▶	P-1000	Pump GG Etanorm 200-1000
▶	M-1000-N053	Electric pump motor
▶	K1-B02-1	Compressor
▶	K1-B02-2	Filter cell
▶	K1-BR1	1st biological cleaning
▶	K1-BR2	2nd biological cleaning
▶	K1-KWT	Clarified water test tank-fish culture
▶	K1-SLB	Sludge processing
▶	K1-CNT	Container -> Deposit site
▶	K1-KGV	Sewage gas processing
▶	K1-VBR	Incineration
▶	K1-HZA	Heating

General Data

Orders/NotificationsTask ListsTask List and OperationsCharacteristicsDocumentsMaintenance ItemsMeasuring Po

Basic Data

Technical Object Type:EquipmentTechnical Object:P-1000-N003Electric pump 003

System Status:INST

Valid From:14.04.1999Valid To:

Basic Data

Subtype:1000Construction Type:

Weight/Unit:26,600 KGSize/Dimension:

Inventory Number:Start-Up Date:

Reference Data

Acquisition Value:1.221,58 EURAcquisition Date:

Manufacturer Data

Manufacturer:Gerätefabrik Holst GmbH

Model Number:P-II

Manufacturer Part Number:TG-879-K

Location Data

Maintenance Plant:1000 Hamburg

Room:

Production Work Center:MECHANIK Mechanical maintenance

Sort Field:

Responsibilities

Planning Plant:1000 Hamburg

Maintenance Work Center:

Asset Viewer

Complete overview of asset information on one screen

© 2014 SAP SE or an SAP affiliate company. All rights reserved.

Public

26

Maintenance Worker Role - Job List

NEW

RENEW

ENABLE

UX DESIGN SERVICES

SAP NetWeaver Business Client

Job List

My Job List (2)

View: [Standard View] | Display Job Card | Additional Information | Start Processing | Edit Assignment | Print Version | Export

Urgency	Priority Descr.	Description	Tech. Object	Start Date	Start Time	WkCtr Descr.	Person Resp.	WP Phase	Work Permit
		Reair Valve Leak	17-B01-2B	18.02.2014	00:00:00	Mechanical maintenance			
	High	Repair Valve	17-B01-2A	18.02.2014	14:48:00	Mechanical maintenance			

Change Query Define New Query Personalize

References

Reference Document: [820685](#) Repair Valve

Technical Object: [17-B01-2A](#) Valve 1

Responsibilities

Work Center: [MECHANIK](#) Mechanical maintenance

Work Center Plant: [1000](#) Hamburg

Location Data

Maintenance Plant: [1000](#) Hamburg

Location: [1](#) Production Area

Room:

Plant Section:

Person Responsible:

Production Work Center:

Last Refresh 18.02.2014 14:55:08 CET Refresh

Simple actions to display Job – Print – Start Processing - Reassign

Hyperlink navigation to objects

Basic details for job shown below

Information Center - Search

Information Center

Search

All Objects Confirmation Document Job Maintenance Plan / Item More

Search For: valve Search Advanced Search

Home > All Objects > Document ...

All Objects

Document (9)

Document Info Record (9)

Job (13)

Maintenance Order (12)

Maintenance Notification (1)

Choose more...

Maintenance Plan / Item (6)

Maintenance Plan (2)

Maintenance Item (4)

Choose more...

Material (12)

Material (12)

Maintenance Notification (1)

Maintenance Notification (1)

Maintenance Order (12)

Maintenance Order (12)

Task List (28)

Task List for Function...(3)

Task List for General...(25)

Choose more...

Technical Object (467)

Functional Location (389)

Equipment (78)

Choose more...

Results 1 - 10 of about 535

10000000212

Document Type: DOC
Description: Turbine
Specification
Change Number:
Display Document Info Record (CV03N) Display Document Info Record in Asset Viewer Add to Favorites

Document Part: 000
Laboratory/Design Office:
Deletion Indicator:

Document Version: 00
Status:

Document Info Record

800271

System Status: CRTD MANC NMAT
Maintenance work center: WC_ELEC
Functional Location:
Details Display Order (IW33) Display Order in Asset Viewer Add to Favorites

Order Type: ZMR3
Plant Associated with Main Work Center: 3200
Basic Start Date: 20.11.2013

Description: valve to be fixed
Equipment:

Maintenance Order

10000677

Type: M2
Work Center: MECHMNT
Date: 05.07.2000
Details Display Notification (IW23) Display Notification in Asset Viewer Add to Favorites

Description: Valve dirty
Equipment: P-3000-N001

Functional Location: C1-B01-1
Maintenance plant: 3000

Maintenance Notification

310

MaintPlan descrptn: PM for pump Relief Valve P1504
MaintPlan sort field:
Display Maintenance Plan (IP03) Add to Favorites

MPTYP: PM
No. of MaintItems: 0001

Strategy:
Call Number: 0

Maintenance Plan

83

Maintenance item description: Servicing of the outlet
valve
Strategy: A
Task List Type: A
Details Display Maintenance Item (IP06) Display Maintenance Item in Asset Viewer Add to Favorites

Maintenance Plan: 21
Equipment:
Task List Group: 00000011

MPTYP: PM
Functional Location: C1-B02-1B
Task List Group Counter: 01

Maintenance Item

3139

International Article Number:
Industry Standard Description (such as A:
Number of a Manufacturer:
Details Display Material (MM03) Display Material in Asset Viewer Add to Favorites

Material Description: 161001-CHECK_VALVE
Material Group:
Base Unit of Measure: EA

Old material number:
Manufacturer Part Number:

Material

T/33/1

Task list description: Pm for Pump Relief valve
P1504
Status: 4
Assembly:
Details Display Task List for Functional Location (IA09) Display Task List for Functional Location in Asset Viewer Add to Favorites

Functional Location: OM.MMA.P1504-RV01
Planning Plant: 3200
System Condition:

Plant: 3200
Maintenance strategy:
Usage:

Task List for Functional Location

Search results returned

Add to Favorites

Hyperlink navigation to object

Side Panel

NEW

RENEW

ENABLE

UX DESIGN SERVICES

Change Maintenance order: 4007898

Save

Read Only

Check Entries

Status Information

Set System Status

Additional Functions

You can also

Order 4007898

Description Seawater Pumps - Replace Bearing

Order Type PM01, Maintenance order

Technical Object NF01-1000-01

Priority Low

System Status LRRA REL

PCNF CSER JIPR MANC PRC SETC

General Data

Location Data

Organizational Data

Operation Data

Object List

Costs

Documents

Permits

General Data

Description: Seawater Pumps - Replace Bearing

Required Start: 10.04.2014

Technical Object: NF01-1000-01

Material:

Assembly:

Assigned Notification: 10004324 Seawater Pumps - Inspection Round

Task List:

Priority: Low

Required End: 10.04.2014

Technical Object Type: Functional Location

Serial Number:

System Condition:

Remove Notification

Assign Task List

Responsibilities

* Work Center: EAMT-M

Planning Plant: 0001

Planner Group: STB

Work Center Plant: 0001

Person Responsible:

Side Panel

Overview

Overviews

Select Content: Confirmation for PM order

(1EAMS_BP_CONF_PM_ORD_BY_AUFNR_V1)

Oper./Act.	Work center	Actual work
0010	EAMT-M	2,0
0010	EAMT-M	0,0
0020	EAMT-M	2,0
0020	EAMT-M	0,0
0030	EAMT-M	0,0
0030	EAMT-M	0,0
0040	EAMT-M	0,0
0040	EAMT-M	0,0

Query Views

Dashboards

Favorites

Launchpad

Viewer

Contextual information available in the side panel e.g. dashboards, 2D/3D visuals etc.

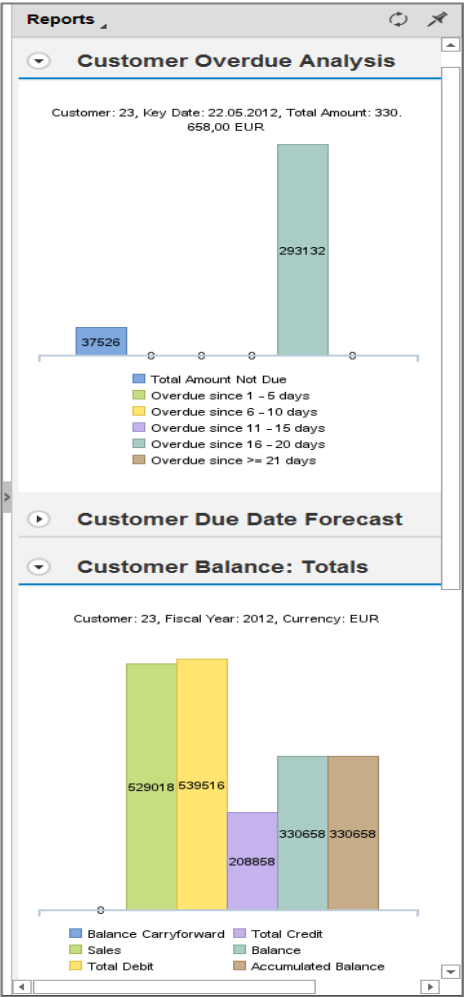
Sidepanels and CHIPS Variations

NEW

RENEW

ENABLE

UX DESIGN SERVICES



Reports

Master Data Details

Customer

Customer: 21
Name: ACZ Systems Ltd.
Language Key: EN
Country: DE
Postal Code: 76684
City: Östringen
Street: Hauptstraße 17
PO Box: 123456
Vendor: LIEFER-LA
Head office:
Alternative payer: 23
Clearing with vendor: ☐
Payment terms: 0001
Account at customer:
User at customer: Mr. Smith

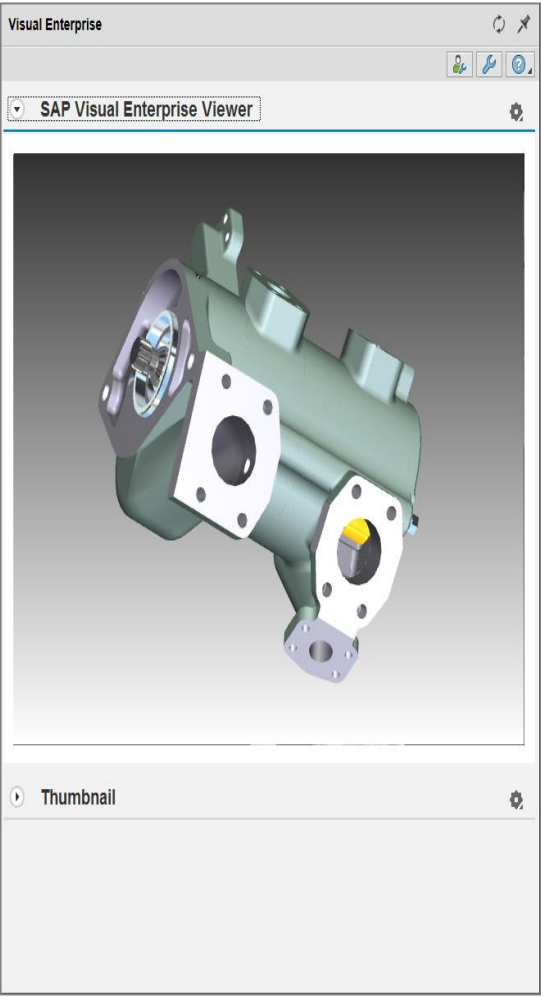
Company Code

Company Code: 0001
Company:
Company name: SAP A.G.
Country Key: DE
City: Walldorf
Currency: EUR
Chart of Accounts: INT
Fiscal Year Variant: K4

Material

Material: P-101

Application Details



Visual Enterprise Integration

Collaboration

StreamWork Activities

Create Edit Details More

Activity Name	Owner
1st Test Downport	Markus Koenigstein
StreamWork Activity for Cus...	Markus Koenigstein

StreamWork Feeds

Activity: StreamWork Activity for Customer A001: foll

Show: All

Jack O'Donnell uploaded a file: Test Item KOENIGSTEIN
21.12.2011 13:24:06 In: StreamWork Activity for Customer A001: follow-up (activity)
21.12.2011 13:25:00
Bookmark Mark Important

"StreamWork Activity for Customer A001: follow-up"
Great. We will pay the remaining money as soon as the missing wheels arrive.
07.12.2011 14:48:08 6 Replies

Social Media

Notes / Attachments

Notes

Add Public Note

Show: Public and Private Notes

Attachments

Title	Changed On
ProductSpecification	22.05.2012 17:12:33

Dienstag, 22. Mai 2012

Notes / Attachments

User Interface Enhancements (SAP EAM) List ATS Components (delivered via EhP7 SP05 on 18.07.2014)

NEW

RENEW

ENABLE

UX DESIGN SERVICES

The screenshot displays the SAP EAM interface for a maintenance order (4009027) and its associated materials. Annotations highlight several new features:

- Search and Highlight:** Callouts point to search bars in the 'Operations' and 'Materials' sections.
- Filter:** A callout points to the 'Filter' button in the 'Operations' section.
- Highlight search term:** A callout points to a highlighted row in the 'Operations' table.
- Search Button:** A callout points to the search button in the 'Materials' section.
- Export to Excel:** A callout points to the 'Export to Excel' button in the 'Materials' section.
- Side Panel for displaying additional information:** A callout points to the 'Master Data Details' side panel.

Operations Table:

Description	Control Key	Work Center	Plant	Work	Unit	Person Responsible	Name of Person Responsible	Status	Number
Prepare pump for maintenance	Sort Ascending	STB-M	0001	1.0	H			CRTD	0011
rack out brkr and disconnect motor leads	Sort Descending	STB-E	0001	1.0	H			CRTD	0021
Uncouple Pump/Motor	Group	STB-M	0001	2.0	H			CRTD	0031
Pull pump and bring to shop for work	(Custom Sorting)	STB-M	0001	4.0	H			CRTD	0041
teardown and notify planner	(Custom Filter)	STB-SH	0001	16.0	H			CRTD	0051
order materials	PM01	PL	0001	0.5	H			CRTD	0061
parts on order	PM01	TD	0001	40.0	H			CRTD	0071
collect parts and assemble	PM01	STR-SH	0001	32.0	H			CRTD	0081
pick up pump from shop and install			0001	4.0	H			CRTD	0091
connect motor leads			0001	1.0	H			CRTD	0101
couple and align	PM01	STB-M	0001	1.0	H			CRTD	0111
line up and run-in	PM01	STB-M	0001	1.0	H			CRTD	0121

Materials Table:

Number	Material	Description	Item Category	Quantity	Unit	Long Text	Plant	Storage Location	Safety Relevance
0010	STB2-GEN-DRIVE-10	Pipe Filter Gage	Stock item	2.000	PC		0001		Not Safety-Relevant
0020	STB2-GEN-DRIVE-12	U Bolt	Stock item	1.000	PC		0001		Not Safety-Relevant
0030	STB2-GEN-DRIVE-3	Filter Cover	Stock item	1.000	PC		0001		Not Safety-Relevant
0040	STB2-GEN-DRIVE-5	Flange	Stock item	1.000	PC		0001		Not Safety-Relevant
0050	STB2-GEN-DRIVE-6	Gage	Stock item	1.000	PC		0001		Not Safety-Relevant
0060	STB2-GEN-DRIVE-8	Isolation Valve	Stock item	1.000	PC		0001		Not Safety-Relevant
0070	STB2-GEN-DRIVE-9	Metering Assembly	Stock item	1.000	PC		0001		Not Safety-Relevant

All list components have been switched to the new list ATS component technology within the entire EAM application. Benefits:

- Improved search
- Mass change
- Personalization of views
- Sorting and grouping
- Filtering
- Aggregation
- Export to / Import from Excel

User Interface Enhancements (SAP EAM) Quickviews (delivered via EhP7 SP05 on 18.07.2014)

NEW**RENEW****ENABLE****UX DESIGN SERVICES**

The screenshot displays the SAP EAM 'Change Maintenance order' interface for order 4009027. The main header shows the order number, description 'Pump Repair Vert 2300V 100T Crane', and other details. A 'Quickview' popup is shown over the technical object field (10000287), displaying a summary of key information:

- Equipment** 10000287
- Category: M, Machinery
- Functional Location:
- Object Type: 4120, Pump
- Model number: KSB ETANORM 1000
- Manufacturer: KSB
- System Status: AVLB, Available
- User Status:
- Location: 0001
- Room: D-E-420

A yellow callout bubble points to the popup with the text: 'Quickview when hovering over description'.

- Quickviews available for
 - Technical Objects
 - Notifications
 - Maintenance Orders
 - Maintenance Plans
 - Materials
 - Long Texts
- Example here for Technical Object: Shows an overview of the most important information about the technical object, such as:
 - Object Type
 - Status
 - Location
 - Room
 -
- Available in:
 - Technical Objects
 - Notifications
 - Maintenance Orders
 - Task Lists
 - Maintenance Plans

Integrating Visual Enterprise

Assign Materials (Spare Parts) to Operation from 2/3D Catalog

Change Maintenance order: 4001078

Save

Read Only

Check Entries

Status Information

Set System Status

Additional Functions

You can also

Order 4001078 Description pump is leaking Order Type PM01, Maintenance order Technical Object P-1000-N001 System Status CRTD MANC NMAT PRC

General Data

Location Data

Organization Data

Operation Data

Object List

Costs

Documents

Permits

Overview of Operations

Remove Operation

Display Visual Instructions

Assign Visual Instructions

Op...	Description	Work Center	Plant	Contr...
0010	check pump	STB-E	0001	PM01
0020	repair pump	STB-E	0001	PM01
0030	check pump after repair	STB-E	0001	PM01
0040				
0050				

Details for operation 0020 - repair pump

Operation Details

Materials

Suboperations

Relationship

Overview of Materials

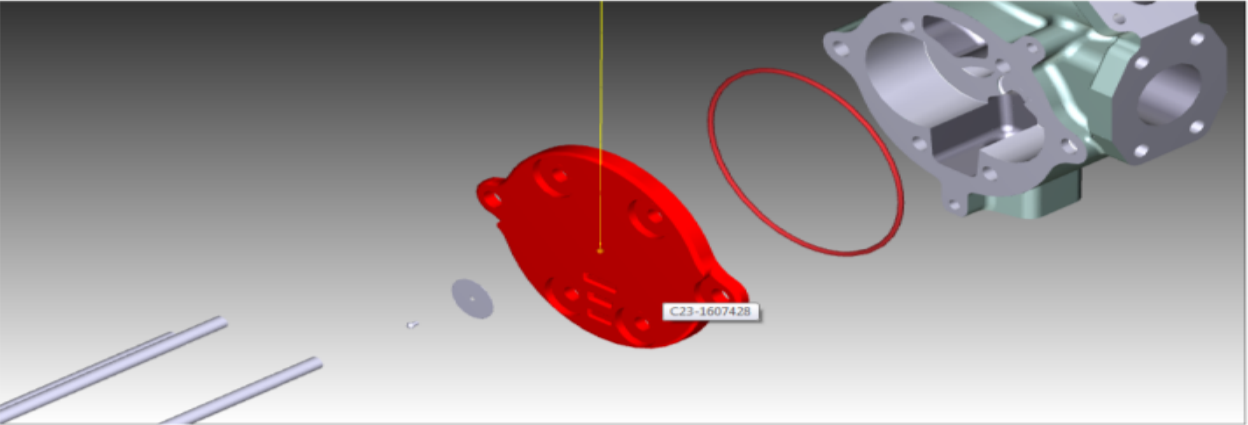
Display Material

Remove Material

Select Spare Parts

Material	Description
	Schraube metrisch 15mm x 6 mm
	Abstandscheibe 44 mm
E43-9W3273_CZRE_01	Gehäuse GGAusgang Adapter SV (with EAN b

Document P-1000-N001 of Maintenance Operat. 0020



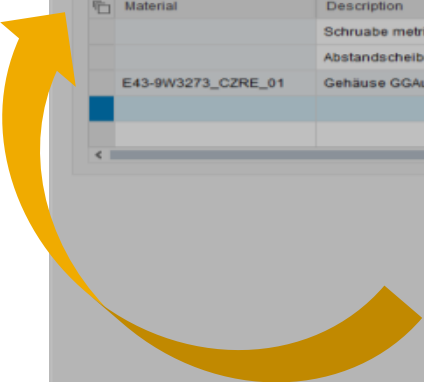
Copy to Spare Parts List

Remove Spare Part

Spare Part	Spare Part Description	Quantity	Unit
	Schraube metrisch 15mm x 6 mm	1,000	PCE
	Abstandscheibe 44 mm	1,000	PCE
E43-9W3273_CZRE_01	Gehäuse GGAusgang Adapter SV (with EAN b	1,000	PCE

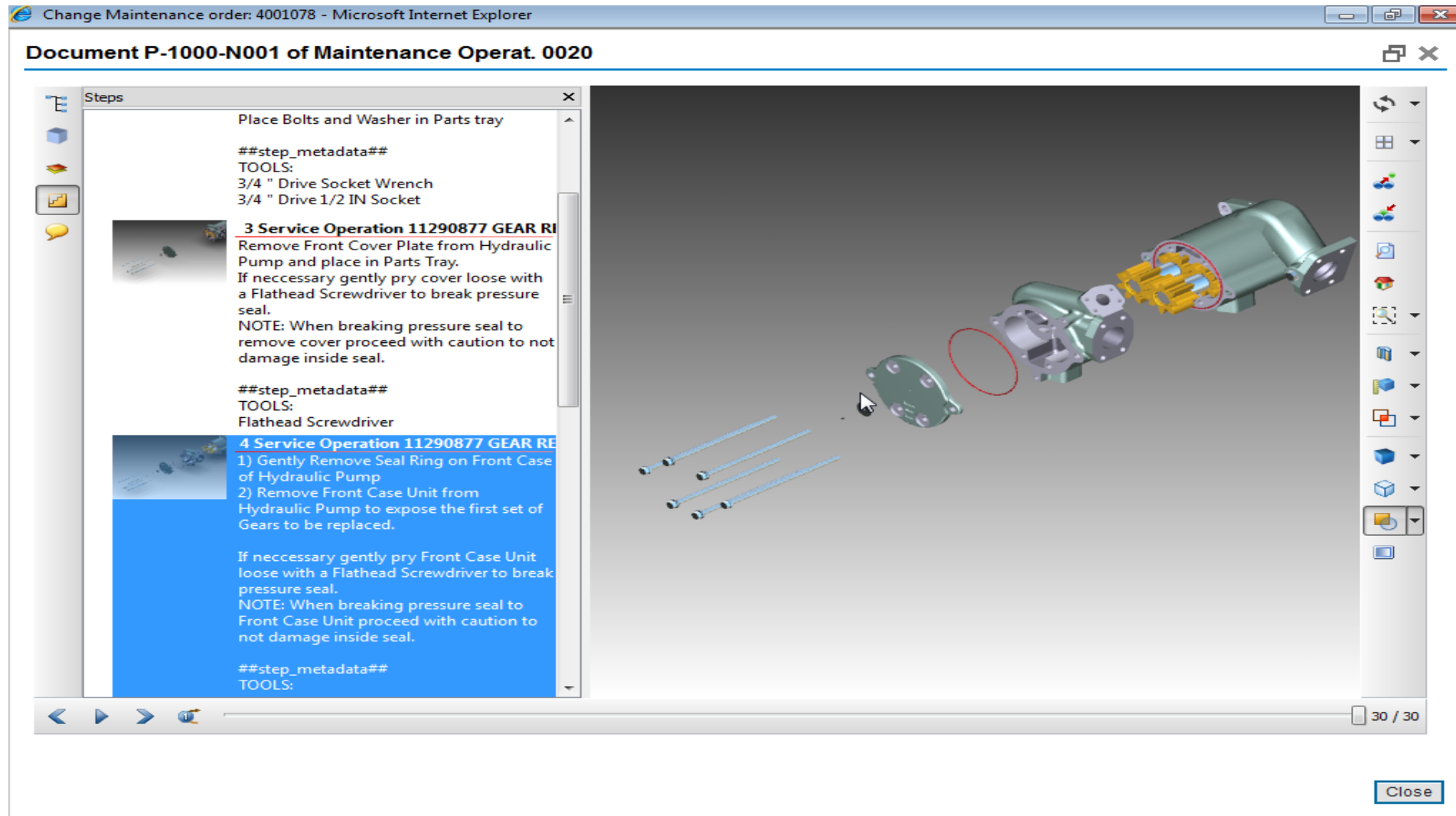
Copy All to Order

Cancel



Integrating Visual Enterprise

Visual Job or Safety Instructions assigned to order operations



Empowering maintenance technicians

To inspect, maintain, and repair assets

SAP Work Manager



Asset Management

- Complete work orders and capture all relevant data
- Access to asset location, repair history, work order details, materials needed
- Create notifications or work orders on the spot
- Integration with GIS (ESRI)
- Integration with ERP CS
- Crew Management
- Guided Workflow

SAP Inventory Manager



Material Management

- Speed receipt / back-order reporting to-and-from shipping/receiving
- Perform physical and cycle counts quickly
- Check availability of materials while on-the-job
- Accept & distribute incoming materials by purchase order

SAP Rounds Manager



Condition Monitoring

- Take measurements and readings
- Historic standards and safe ranges
- Generate notifications on-the-spot
- Trend readings, points and sequences to avoid emergencies and outages

SAP Work Manager 6.1



- Integration with GIS*
- Integration with SAP 3D Visual Enterprise
- ERP Customer Service
- Crew management
- UX enhancements

* Open UI Integration seamlessly ties in 3rd party applications (ESRI)

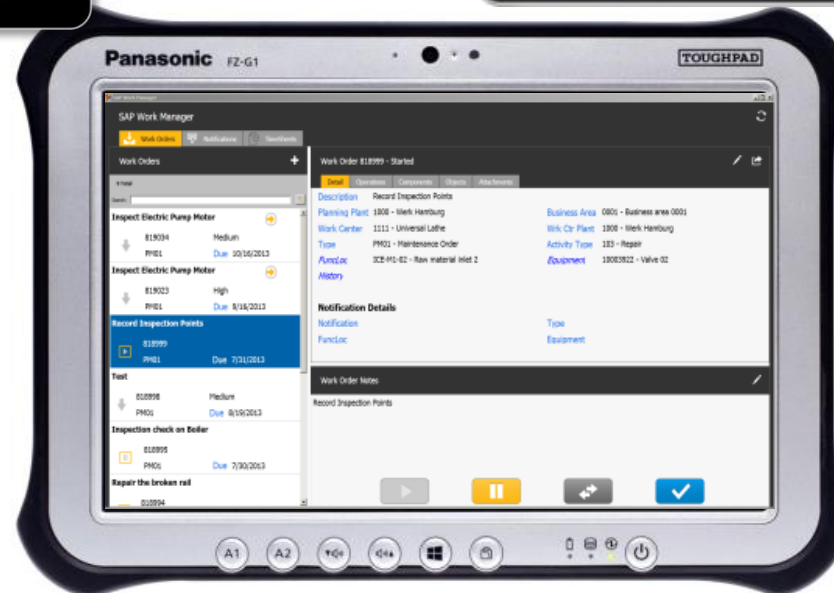
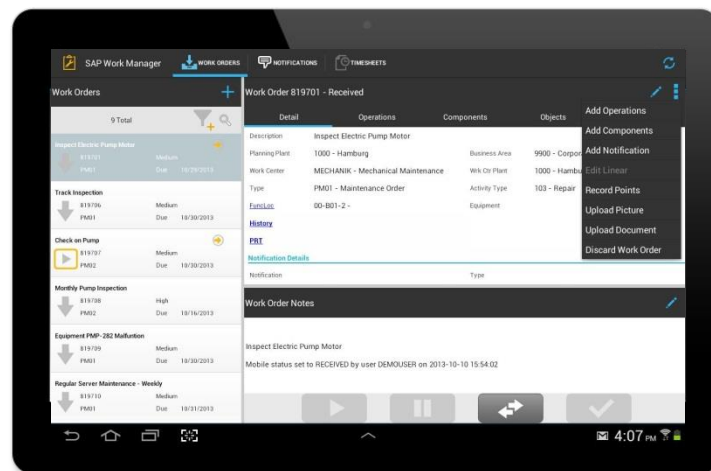
Delivered on SAP Mobile Platform 3.0



SAP Work Manager 6.1 – Android & iOS & Windows

Work Order Management

- Notifications
- Repair history
- Work order details
- Materials needed
- Time & attendance confirmation
- Measurement docs and attachment support
- Linear Asset Management
- GIS and 3D Visual Enterprise integration
- Integration with inspection rounds
- SAP MRS integration



Above example screen shown on a Windows 8 rugged tablet.



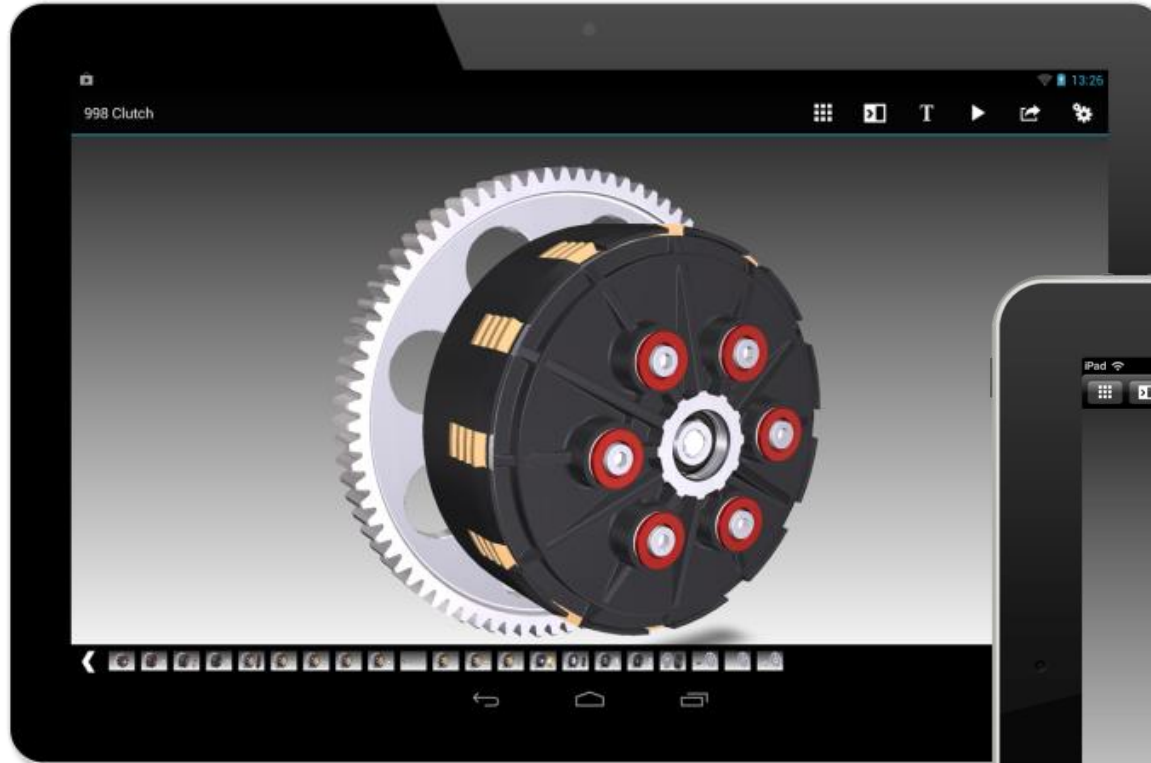
SAP 3D Visual Enterprise Viewer – Android & iPad

3D Work Instructions

- Assembly
- Installation
- Maintenance
- Repair / Service
- Training

Analytics

Integrated SDK



Augmented Reality

SAP AR – Service Technician

planned

Companion Application to SAP Work Manager

- Link to the SAP Work Manager mobile app through a simple QR-Code scan

Visual Enterprise 3D model visualization and animation

SAP 3D Visual Enterprise steps browsing

Equipment notes

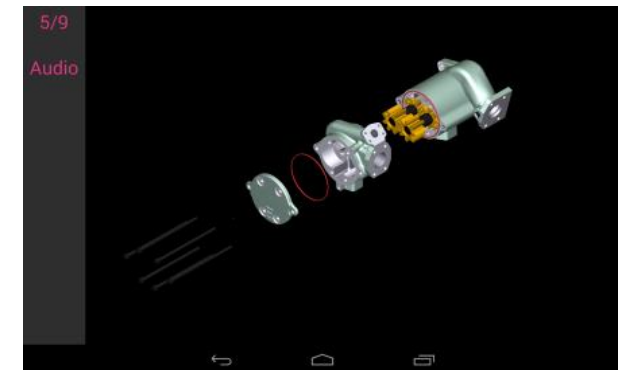
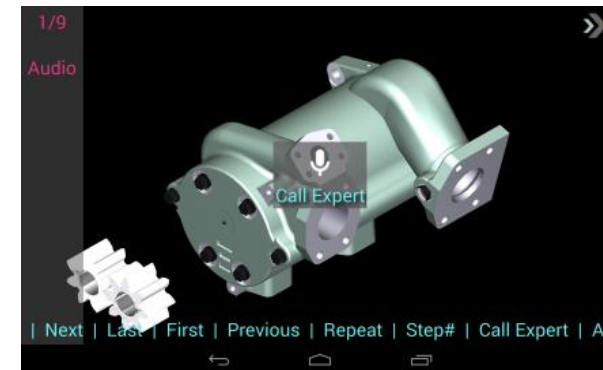
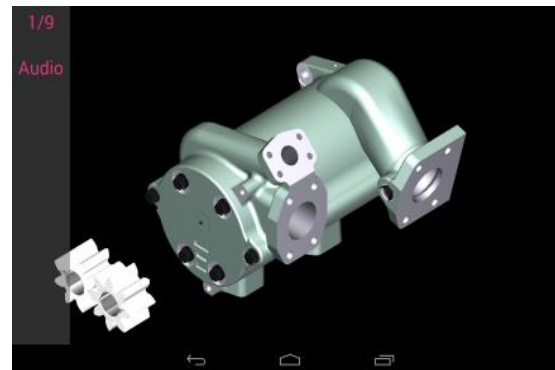
Remote expert calling

Hands-free application

- All the application steps can be completed without gestures or touch events
- Required inputs are managed through voice recognition

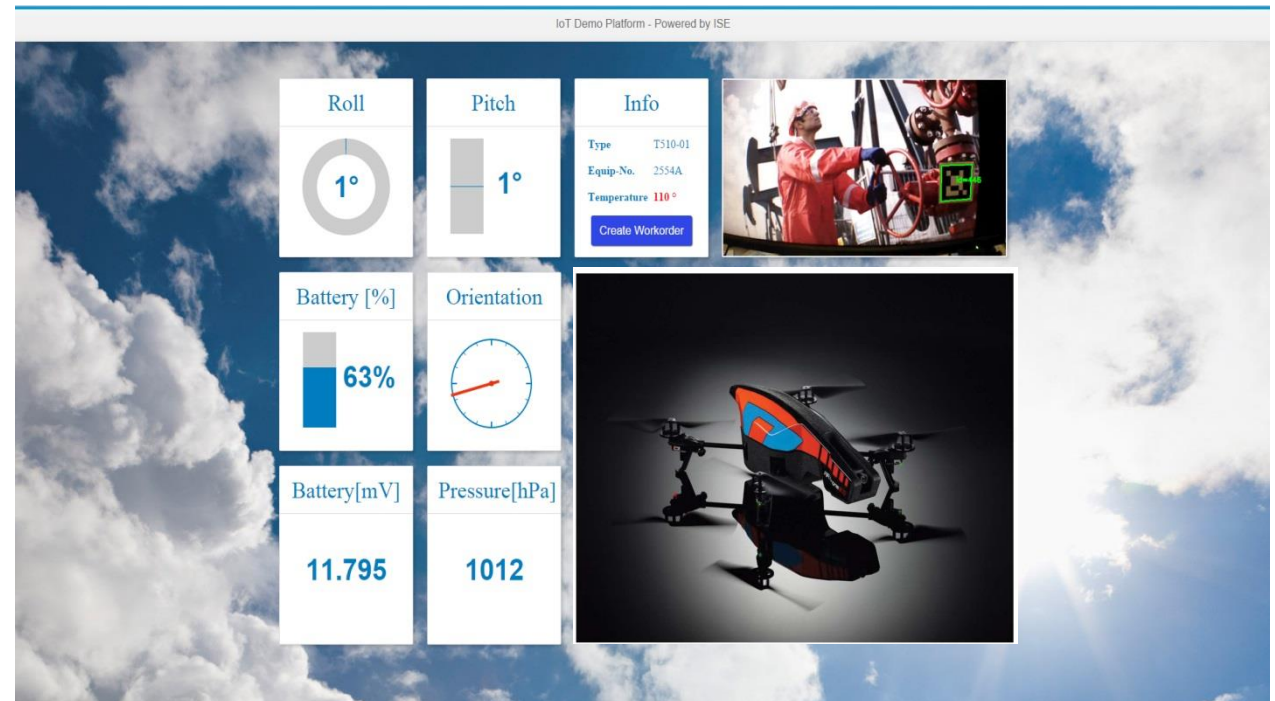


Video



Maintenance Inspections with Drones

- Showcase to extend the SAP Service Scenario based on the SAP HANA IoT Platform
- Support the interactive visual inspections of assets and plants
- Leveraging state of the art technologies
 - Sensors
 - Object Recognition
 - Face Recognition
 - GPS
 - Drone steered with smart glasses



SAP Enterprise Asset Management

Key Points to Take Home

Master Data

Integration

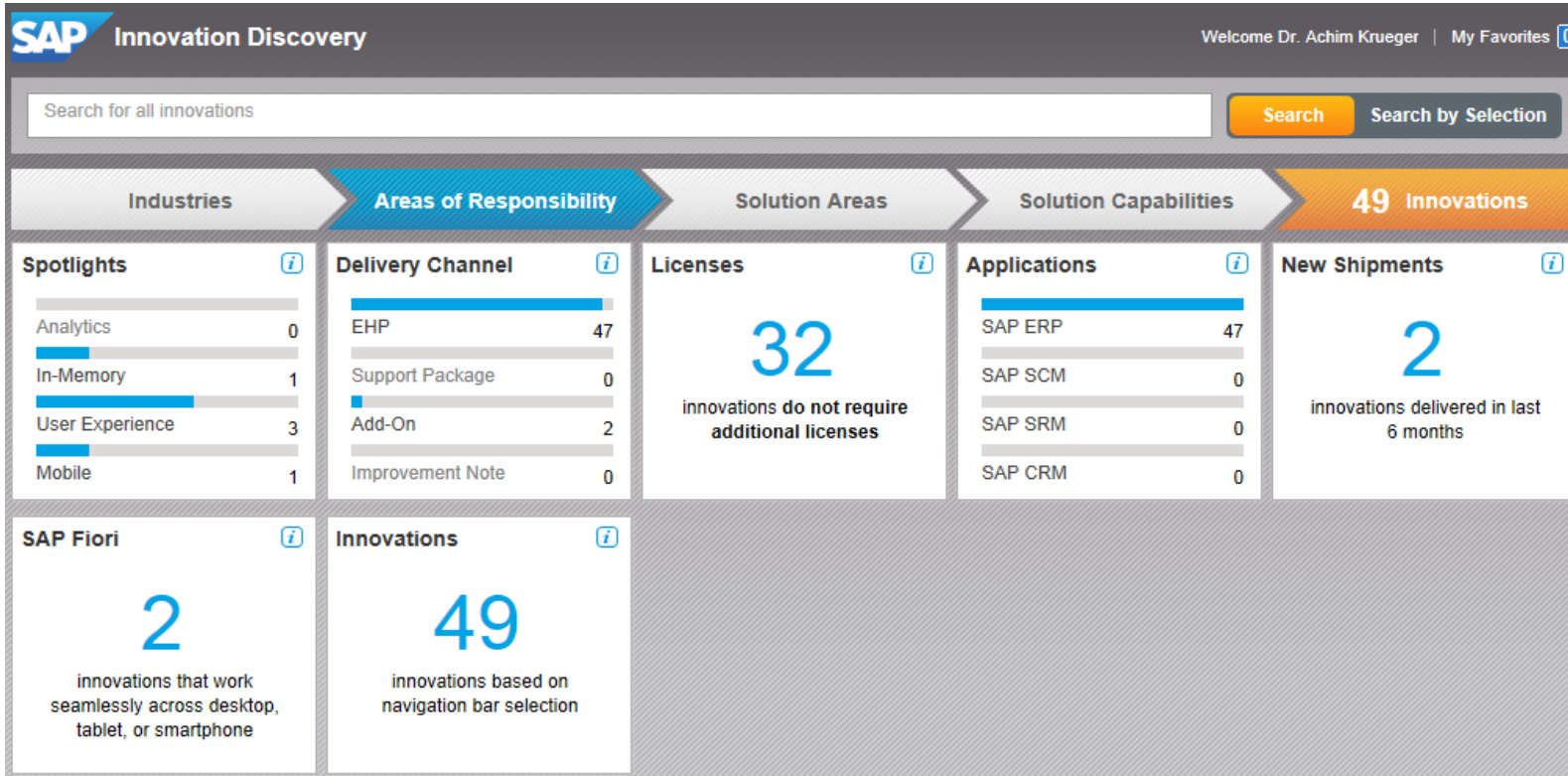
Connecting to the Asset



Collaboration

UX

SAP Enterprise Asset Management Information sources



<http://service.sap.com/innovation-discovery>

Information sources

<http://www.sap.com/eam>

<http://service.sap.com/roadmap>

<http://www.sap.com/solutionexplorer>

www.twitter.com/EAMatSAP

<http://scn.sap.com/community/eam>

<https://apps.support.sap.com/innovation-discovery>



Thank you!



Dean Fitt

Solution Manager

Enterprise Asset Management
Solutions

SAP SE

Dietmar-Hopp-Allee 16
69190 Walldorf, Germany

email: dean.fitt@sap.com

© 2014 SAP SE or an SAP affiliate company. All rights reserved.

No part of this publication may be reproduced or transmitted in any form or for any purpose without the express permission of SAP SE or an SAP affiliate company.

SAP and other SAP products and services mentioned herein as well as their respective logos are trademarks or registered trademarks of SAP SE (or an SAP affiliate company) in Germany and other countries. Please see <http://global12.sap.com/corporate-en/legal/copyright/index.epx> for additional trademark information and notices.

Some software products marketed by SAP SE and its distributors contain proprietary software components of other software vendors.

National product specifications may vary.

These materials are provided by SAP SE or an SAP affiliate company for informational purposes only, without representation or warranty of any kind, and SAP SE or its affiliated companies shall not be liable for errors or omissions with respect to the materials. The only warranties for SAP SE or SAP affiliate company products and services are those that are set forth in the express warranty statements accompanying such products and services, if any. Nothing herein should be construed as constituting an additional warranty.

In particular, SAP SE or its affiliated companies have no obligation to pursue any course of business outlined in this document or any related presentation, or to develop or release any functionality mentioned therein. This document, or any related presentation, and SAP SE's or its affiliated companies' strategy and possible future developments, products, and/or platform directions and functionality are all subject to change and may be changed by SAP SE or its affiliated companies at any time for any reason without notice. The information in this document is not a commitment, promise, or legal obligation to deliver any material, code, or functionality. All forward-looking statements are subject to various risks and uncertainties that could cause actual results to differ materially from expectations. Readers are cautioned not to place undue reliance on these forward-looking statements, which speak only as of their dates, and they should not be relied upon in making purchasing decisions.